

**EUROPEAN SOCIAL SURVEY  
EUROPEAN RESEARCH  
INFRASTRUCTURE CONSORTIUM  
(ESS ERIC)**



**ANNUAL ACTIVITY REPORT  
1 JUNE 2023 – 31 MAY 2024**



## FOREWORD

### PROFESSOR ANN-HELÉN BAY, OSLO METROPOLITAN UNIVERSITY

Since joining the ESS as Chair of the General Assembly in October 2023, I have been extremely impressed with the scale of the project.

Whilst the Core Scientific Team (CST) does an incredible job of preparing the questionnaire and conditions for fielding the survey, it is undoubtedly the determination of national teams that ensures the survey data is collected to the highest possible standards, allowing it to be meaningfully comparative.

The ESS has always aimed to be the most representative voice for the general public across Europe on a wide range of important social measures. It is therefore imperative that we continue to hear from people across all parts of society and we are incredibly thankful to every single respondent who offers their time to increase the ESS dataset.

Round 11 fieldwork has been undertaken throughout 2023-24 and data has now been deposited to the archive for the majority of the 31 participating countries. Data from this round is available from June 2024, meaning that the entire ESS dataset will include more than 500,000 interviews - each containing at least 200 questions.

One aspect of implementing surveys on this scale is the need to constantly look to the future. The pandemic taught the ESS that self-completion modes can be implemented without necessarily reducing the quality of data.

The decision to move data collection from in-person interviews to self-completion methods was a difficult one, but is now set out in the ESS Strategic Plan. I have no doubt that the change will be implemented with the care and detail required to ensure that the ESS continues to be one of the best sources of public opinion data in the world.

I am truly honoured to become only the second Chair of the ESS ERIC General Assembly, and I thank all my colleagues on that body who continue to work hard in ensuring that internationally collaborative science projects are funded and lauded - in the social sciences and beyond.

**“ I am truly honoured to become only the second Chair of the ESS ERIC General Assembly, and I thank all my colleagues on that body who continue to work hard ”**

## CONTENTS

|   |            |
|---|------------|
| Foreword – Professor Ann-Helén Bay, Chair of the General Assembly.....  | p2         |
| Introduction – Professor Rory Fitzgerald, Director of the ESS ERIC..... | p4-5       |
| <b>SCIENTIFIC ACTIVITIES</b>  |            |
| Strategic highlights.....   | p6         |
| Survey operations.....  | p8         |
| Self-completion transition.....   | p12        |
| External funding.....   | p14        |
| Cross-National Online Panel (CRONOS-2).....                             | p16        |
| <b>DISSEMINATION</b>  |            |
| Media and social media.....   | p18        |
| Selected events.....  | p20        |
| User statistics.....  | p22        |
| Academic impact.....  | p24        |
| Other dissemination activities.....                                     | p26        |
| <b>GOVERNANCE AND OPERATIONS.....</b>                                   | <b>p28</b> |
| <b>FINANCES.....</b>  | <b>p34</b> |
| <b>ANNEXES</b>  |            |
| 1. General Assembly: National representatives.....                      | p36        |
| 2. General Assembly Committees: Membership.....                         | p38        |
| 3. Director's Committees: Membership.....                               | p40        |
| 4. Audited accounts.....  | p42        |
| 5. Key Performance Indicators (KPIs).....                               | p44        |

## INTRODUCTION

### PROFESSOR RORY FITZGERALD, DIRECTOR OF THE ESS

2024 is the year we finally got to celebrate 20 years of ESS data with a wonderful (COVID delayed) three-day conference in Lisbon, Portugal.

As Director of the ESS ERIC, it was fascinating to hear how the ESS is being used to address crucial topics for society, using our high-quality data through rigorous scholarly investigations. Whether it was climate change, immigration, justice and fairness, democracy or any of the other topics covered, the quality was clear throughout.

I am certain that the original founders of the ESS would be delighted that their vision has been realised with the ESS providing the high-quality comparative data, so often lacking in the past. It was particularly exciting to see the interest from younger scholars at the conference and their passion for engaging

in comparative quantitative research.

2024 was also a year when the lenses of the ESS focus more on younger Europeans than in the past. The ESS ERIC is coordinating a €9.75m Horizon Europe project – Infra4NextGen – with the Gender and Generations Project (GGP), European Values Survey (EVS) and CESSDA ERIC – to harness data from the social sciences to address the NextGenerationEU policy area. This exciting project

brings together existing data, new data collected in our CRONOS ‘web first’ panel and public deliberation, to deliver survey-based evidence to help address five key policy areas (digital, equal, green, health, strong). We are looking forward to the first project results arriving in 2025 and to sharing these with new and existing audiences.

This follows on from the success of the SUSTAIN-2 project, funded under the Horizon 2020 programme. Following delays as a result of

the pandemic, the project was completed in March 2024 and received favourable feedback in the final evaluation report conducted by an external reviewer.

Late 2023 and early 2024 was also a period of exceptionally fast change for the infrastructure. Faced with a more rapid than expected decline in face-to-face interviewing capacity in parts of Europe, ESS decided to immediately bring forward the launch of a new self-completion methodology. 2024 has therefore been dominated by preparing for a mixed mode ESS Round 12, with fieldwork due to start in September 2025. Half of all interviews will be completed face-to-face and half in the new self-completion modes (web and paper self-completion).

ESS will supply its users and the wider field with

unique cross-national mode comparison data. Our existing feasibility testing and piloting has been rather reassuring, suggesting that, overall, ESS data quality will be as high, if not higher, than its face-to-face equivalent. There is evidence that good response rates and sample representativeness can be achieved.

ESS remains committed to working to maintain good cooperation with its surveys and to oppose the case made on occasion that single digit response rates will become the norm in the future.

2024 was also the year that ESS adopted its first ever strategic plan ‘The Road to a Sustainable Self-Completion Future’. This ambitious plan not only underlines the commitment of our stakeholders to change our core data collection approach, but also seeks to upgrade

the research infrastructure by seeking to include our CRONOS web first panel as a permanent part of our services to users in the future. In 2025 we will be launching plans to make this aspiration a reality.

As ever, I would like to thank all of our stakeholders including our General Assembly members, National Coordinators, Core Scientific Team, Host institution, Finance Committee, Science and Methods advisory boards and all of our data users and research participants. In particular, I would like this year to thank our host country the UK, represented by UKRI-ESRC, who have agreed to host the ESS ERIC and its HQ for the 2025-2029 period. All ERICs needs a supportive host country and we are delighted that the UK provides that support and leadership within the ESS.

“ [the] ESS-SUSTAIN-2 project has been a success story and has exceeded the initial expectations in terms of achieving its objectives and ensuring sustainability and impact of the ESS ERIC ”

# STRATEGIC HIGHLIGHTS

## ANNUAL ACTIVITY REPORT 2023-24

### Strategic Plan 2024-29

In April, the ESS published its [Strategic Plan 2024-29](#). This plan is built around the decision to change data collection over the next three rounds of the survey: from face-to-face interviews to self-completion methods.

The Strategic Plan therefore formalises a phased transition, with Round 12 (2025/26) data collected in parallel modes: half the sample in each country will be interviewed through in-person interviews, with the other half completing online or postal questionnaires.

This will allow for mode effects to be fully considered ahead of a full transition to only self-completion data collection in Round 13 (2027/28). The Plan also outlines the intention to implement a cross-national online panel by 2029 which would be fielded between the main surveys.

This online panel would become a permanent feature of the ESS and will be based on the model used in various Horizon 2020 and Horizon Europe projects: CROss-National Online Survey (CRONOS, see page 16-17).

As part of the self-completion transition, financing of national teams will be reviewed to ensure that they are adequately resourced to continue delivering high quality fieldwork. National teams will benefit from an internal training programme to support the transition and the composition of the Core Scientific Team (CST) will be refreshed and enhanced. An external training programme for ESS users will also be developed following a consultation of the demand for digital training.

Objectives set out in the Strategic Plan will be incorporated into the next work programme.

### Awards

During the reporting period, the ESS was the recipient of two major scientific awards.

In August 2023, the Slovak Academy of Sciences (SAS) announced Professor Rory Fitzgerald as the latest recipient of their International SAS Prize. The Prize is awarded to a foreign national as a special expression of recognition for excellent work in connection with the Slovak Republic in the area of social sciences and culture.

The Scientific Council of SAS cited Professor Fitzgerald's role in helping the Slovak Republic to become a full member of the ESS European Research Infrastructure Consortium (ERIC) in 2018.

Professor Fitzgerald received the Prize at a ceremony in Bratislava in September 2023.

In April 2024, the Kohli Foundation announced the ESS as the recipient of their Infrastructure Prize for Sociology 2024.

The Kohli Foundation for Sociology is an independent private foundation dedicated to honour and promote excellent work that promises to move sociology forward.

The Infrastructure Prize for Sociology is awarded annually to a substantial infrastructure that advances sociological knowledge.

As part of the prize, the ESS will be given €10,000, which will be re-invested back into the project to recognise specific innovations and impacts by ESS national teams.

The Prize will be formally presented to ESS Director, Professor Rory Fitzgerald, at a ceremony in Berlin on 13-14 November 2024.

### Global Links

The ESS continued to develop links with similar large-scale surveys located across outside Europe. The ESS now has a four-year Memorandum of Understanding (MoU) in place with organisations who conduct large-scale national surveys in a number of countries. These are:

- China (Renmin University of China)
- Japan (Osaka University of Commerce)
- Korea (Survey Research Centre, Sungkyunkwan University)
- Taiwan (Institute of Sociology, Academia Sinica)
- United States (NORC at the University of Chicago)

Additionally, MoUs are in place with the European Values Survey (Tilburg University) and East Asian Social Survey Research Network (EASS) - which collectively includes the Chinese General Social Survey

(CGSS), Japanese General Social Surveys (JGSS), Korean General Social Survey (KGSS) and Taiwan Social Change Survey (TSCS).

During the reporting period, formal agreements were signed with the General Social Survey, United States (November 2023); EASS (January 2024); CGSS (January 2024); TSCS (January 2024); and EVS (March 2024).

All four members of EASS (China, Japan, Korea and Taiwan) agreed to field the ESS Round 12 (2025) wellbeing module in their next wave. This will make it possible to compare the attitudes and behaviours of respondents in European and East Asian countries for the first time using the ESS. The South African Social Attitudes Survey (SASAS) 2024/25 will field the ESS Round 12 health inequalities module.

# SURVEY OPERATIONS

## ANNUAL ACTIVITY REPORT 2023-24

### ESS Data Portal

The [ESS Data Portal](#) was launched in May 2022 and is now the sole point of access to our data. Improvements to the tool have been made throughout this reporting period.

The most significant development is the Variable Viewer tool, made available to data users in March 2024. This allows anybody to view the results of individual survey questions online, without having to be logged in as a user or having to download data.

This allows users to view results of survey questions in a bar chart, map and data table by simply selecting a survey question from the list of variables in each round.

It is a significant development for the infrastructure in making data freely available and as accessible as possible.

### Data releases and updates

New editions of Round 10 face-to-face (edition 3.1) and self-completion (ed. 3.0) data files were published on the ESS Data Portal in July 2023.

In November 2023, these Round 10 datasets were again updated: main data (ed. 3.2) and self-completion (ed. 3.1). These were published alongside new versions of interviewer data; and contact form data (both ed. 3.1).

November 2023 also saw the release of new versions of data from Round 1 (ed. 6.7); Round 4 (ed. 4.6); Round 5 (ed. 3.5); Round 6 (ed. 2.6); Round 7 (ed. 2.3); Round 8 (ed. 2.3); and Round 9 (ed. 3.2). These include minor corrections to previous editions.

Data from the CROss-National Online Survey (CRONOS-2) Panel from 12 countries was published in July 2023.

### Multilevel Data

In April 2024, the Multilevel Data resource was updated to be applied to the Round 10 datasets.

The Multilevel Data resource collates contextual information on a range of indicators from external data providers, including Bertelsmann Stiftung, Comparative Political Data Set, Database of Political Institutions, Democracy Barometer, Eurostat, Freedom House, OECD, Transparency International, UNESCO, United Nations and World Bank.

These statistics on crime, demography, economy, education, health, migration, political institutions and population can then be downloaded alongside ESS survey data.

This latest edition is available alongside similar data from rounds 4-9 (2008-19).

### Round 11

Data collection progressed across all 31 participating countries during the reporting period. Some countries particularly struggled with interviewer capacity, and those unlikely to achieve a sufficient sample size were reviewed on a country-by-country basis.

All countries aimed to undertake fieldwork in line with the Survey Specifications, other than Czechia who were given special dispensation to conduct the survey using self-completion modes due to insufficient national capacity for in-person interviews.

The central DataCTRL self-completion tools (SurveyCTRL and QuestionnaireCTRL) were piloted in Round 11 in some countries and used in Czechia for its data collection.

Data collection took place in Ukraine, funded by the GA.

The Round 11 source questionnaire was made publicly available via the ESS website in January 2024.

myESS Round 11 – the platform used for internal communications between national teams and the CST – was used throughout 2023-24. A review of the platform – including user feedback – was undertaken ahead of the launch of myESS Round 12.

The first release of Round 11 data took place, as planned, in June 2024.

Design weights and sample design variables were provided for all 13 Round 11 first-release countries and included alongside this initial data release.

### Round 12

The Round 12 Survey Specification was circulated to national teams and published on the ESS website in January 2024.

The innovative specification requires that countries achieve half the interviews in face-to-face mode and half in self-completion mode (web and paper). Sample units are to be randomly allocated to either face-to-face OR self-completion mode, providing robust data allowing the impact of the mode switch to be assessed.

For the self-completion part countries must determine if they can use a 'postal first' or fieldworker first' design.

Guidelines for employing a fieldworker-assisted approach for both main self-completion data collection and a follow-up phase were issued in the Round 12 specification.

## SURVEY OPERATIONS

### ANNUAL ACTIVITY REPORT 2023-24

Countries must also choose when to send sample units a paper questionnaire choosing, either a sequential design (paper questionnaire sent with a later reminder) or a concurrent design (paper questionnaire sent with the first invitation and other reminders).

Work on developing the two Round 12 rotating modules – personal and social wellbeing and attitudes to immigrants and refugees – continued in 2023-24.

This included reviewing results of pre-testing, analysis of a selection of the split ballot questions and experiments, and cognitive interviewing. It was agreed that the final stage of Round 12 pre-testing will be a pilot in two countries (Bulgaria and Ireland) based on the self-completion approach. This will also allow the new ESS data collection systems for self-completion to be tested.

#### Round 13

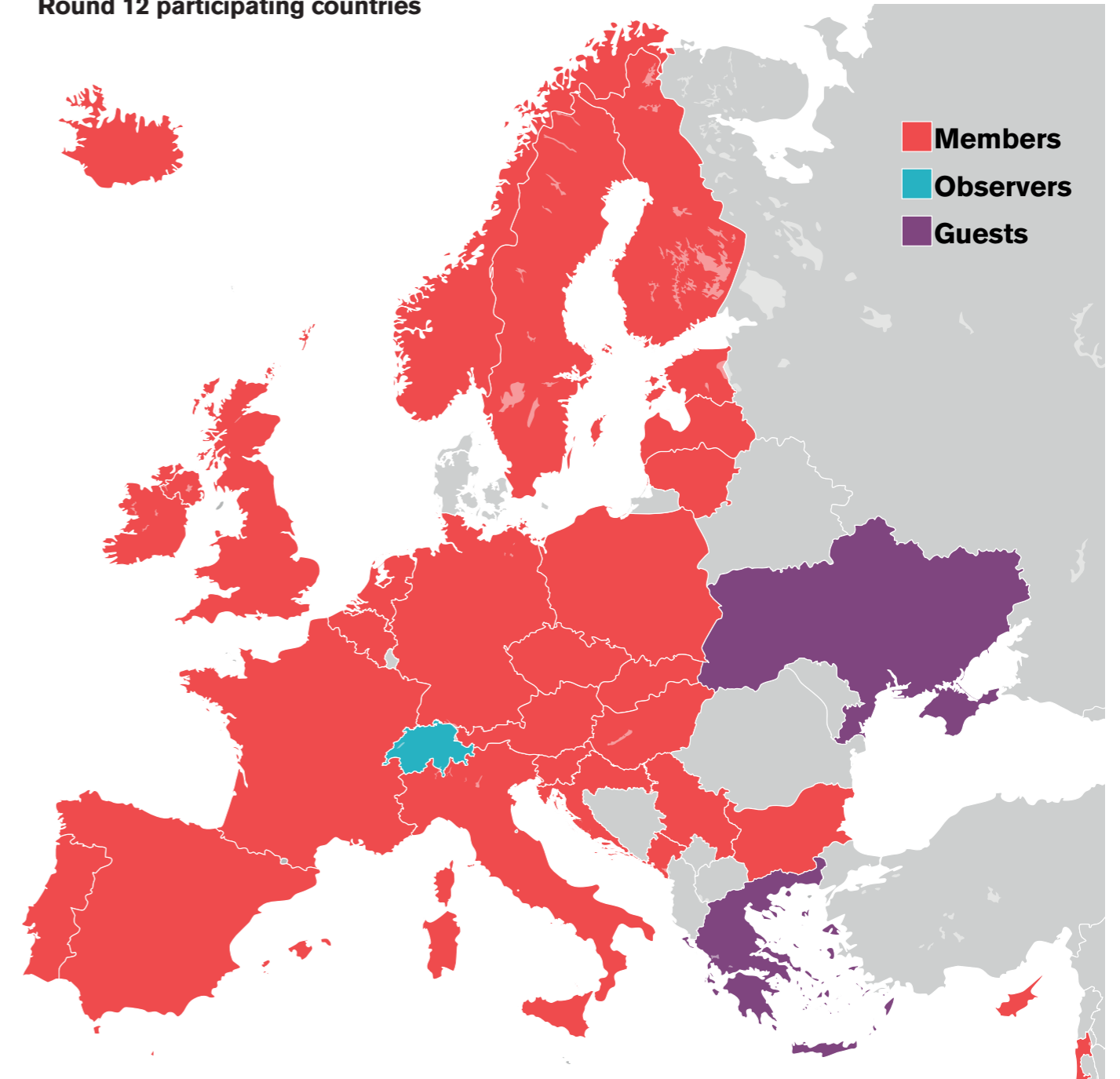
The call for the first stage of the application process for Round 13 rotating modules closed in April 2024. A total of 13 eligible applications were received – three for repeat modules and 10 for new modules. This is a higher number of applications than Round 12 and the same number as Round 11, but less than earlier ESS rounds. The SAB will meet in June 2024 to select those eligible for stage two.



**The innovative [Round 12] specification requires that countries achieve half the interviews in face-to-face mode and half in self-completion mode (web and paper).**



#### Round 12 participating countries



Source: ESS HQ. 31 countries are expected to participate in Round 12 of the ESS

# SELF-COMPLETION TRANSITION

## ANNUAL ACTIVITY REPORT 2023-24

In addition to the challenges that face-to-face data collection encountered during the pandemic, broader concerns of its sustainability as a high quality survey mode have grown over recent years. For instance, the ESS has seen a steady decline in response rates over the years.

Adverse effects of interviewer behaviour on measurement and representation have also been documented.

In May 2022, the ESS General Assembly endorsed a plan to transition data collection from face-to-face interviews to a 'self-completion' design.

It has since been decided by the CST, after a recommendation by the Methods Advisory Board (MAB) and Scientific Advisory Board (SAB), that Round 12 (2025/26) fieldwork will be conducted in all participating countries using a mixed-mode design.

In each country, a random half of the effective sample will be interviewed via face-to-face interviews, with the other half completing web or paper self-administered questionnaires.

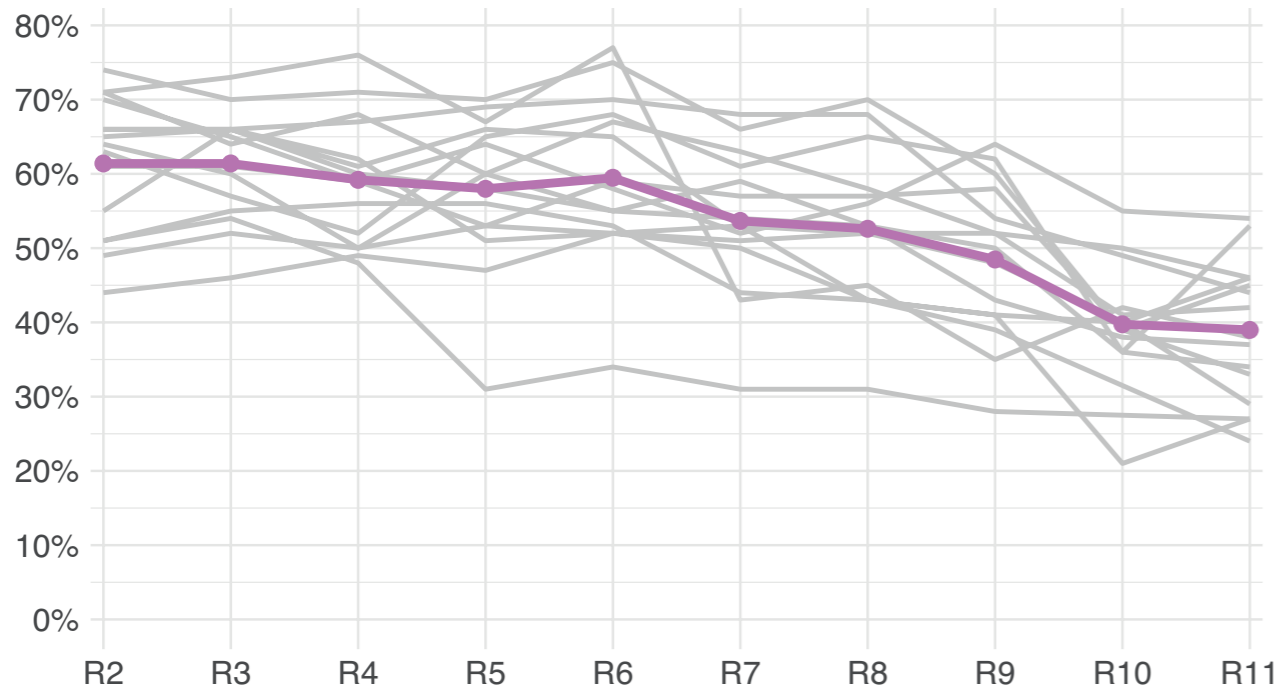
During the reporting period, preparatory work has been conducted ahead of the parallel run and eventual mode switch.

- A self-completion survey was implemented in France alongside Round 11 face-to-face data collection.

- Small-scale self-completion feasibility studies were conducted in Lithuania and the Slovak Republic in 2023 and 2024.

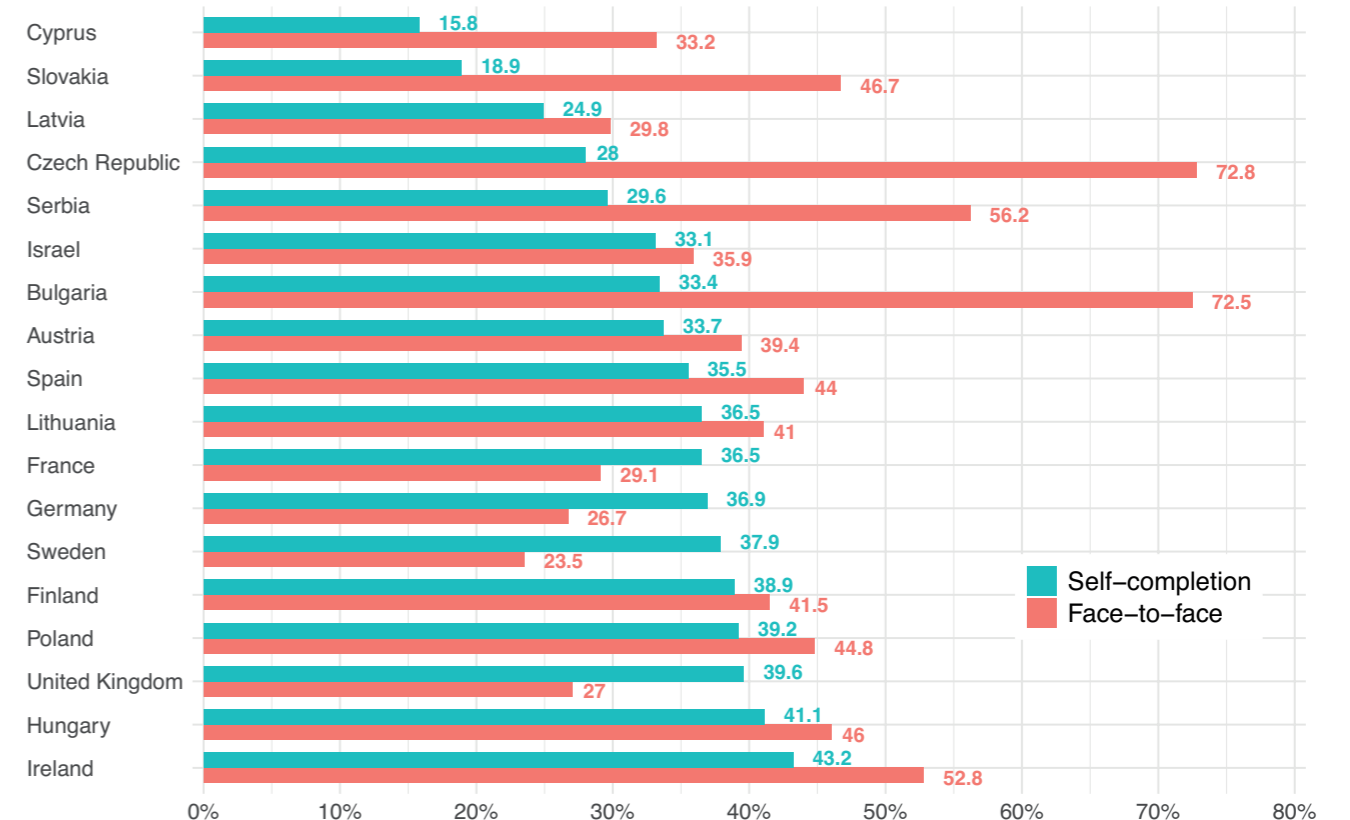
- Czechia conducted Round 11 fieldwork using the ESS self-completion approach.

Response rates over time



Source: ESS HQ

Recent response rates by mode



Source: ESS HQ

SCIENTIFIC ACTIVITIES

SCIENTIFIC ACTIVITIES

## EXTERNAL FUNDING

### ANNUAL ACTIVITY REPORT 2023-24

The ESS ERIC has led two projects funded by the European Commission, via their Horizon 2020 and Horizon Europe funding programmes, during the reporting period.

#### SUSTAIN-2

*Next Steps in Securing the Sustainability of the European Social Survey*

Following the success of implementing ESS-SUSTAIN (grant agreement no. 676166), ESS-SUSTAIN-2 began in January 2020 and was expected to run for three years, until December 2022. As a result of the pandemic, the project was extended until 31 March 2024. The €4.9m Horizon 2020 project was coordinated by the ESS (grant agreement no. 871063).

The project ensured the ESS enhanced links with other infrastructures, including the European Values Study, and promoted ESS data among key European policy makers.

The project also ensured that membership development and consolidation activities continued and this is reflected in the fact the ESS continues to have the highest number of members of any ERIC across all scientific disciplines.

The second iteration of the CROss-National Online Survey (CRONOS-2) Panel was implemented and this laid the foundations for an ESS web panel in future (see page 16).

#### Infra4NextGen

*Providing research infrastructure services to support Next Generation EU*

Infra4NextGen is a €9.75m Horizon Europe project being coordinated by the ESS. The four-year project began on 1 March 2024 (grant agreement no. 101131118). The project also includes CESSDA ERIC, the Gender and Generations Project and the European Values Survey. The project will compile existing outputs from

key social science research infrastructures to inform the NextGenerationEU recovery plan and European Union youth policy. NextGenerationEU aims for Europe 'to build a greener, more digital and more resilient future' with a focus on five key areas: Make it Green; Make it Digital; Make it Healthy; Make it Strong; and Make it Equal.

In each of the five areas, an inventory of relevant items already fielded on cross-national surveys will be produced. Existing data from these surveys will be analysed and summarised by academic experts to produce a series of policy-relevant tabulations and visualisations with commentary presented online. This initial analysis will be supplemented with new data collected on each topic via CRONOS (see p16-17).

This data will be incorporated into a new interactive map that will be aimed at young people

to improve data analysis skills. A training programme will also be included.

The project has a Stakeholder Board that includes members from the European Commission's Joint Research Centre and other academics who serve in an advisory capacity. A Youth Board is also acting as an advisory body.

The ESS has also participated in three Horizon 2020 or Horizon Europe projects in the reporting period.

#### EOSC Future

This project was completed in March 2024 (grant agreement no. 101017536). ESS ERIC conducted a pilot exercise to merge contextual data about climatic conditions with microdata from rounds 8, 9 and 10 of ESS.

#### ERIC Forum 2

*Second implementation project for the ERIC Forum*

ERIC Forum 2 is a four-year

Horizon Europe project that brings together European Research Infrastructure Consortia (ERIC) across all scientific disciplines (grant agreement no. 101124559).

The project began on 1 September 2023 and follows on from an initial implementation project. The ESS is participating in work around governance and operations, data protection and communications.

#### PAUL

*Pilot Application in Urban Landscapes - towards integrated city observatories for greenhouse gases (PAUL)*

The ESS is a partner in this Horizon 2020 project that aims to develop a systematic greenhouse gas measurement system for urban areas (grant agreement no. 101037319).

The ESS is leading on the implementation of a survey to monitor public opinion towards

local climate action plans. ESS ERIC is the only social survey research infrastructure involved in the PAUL project, as part of a consortium of 31 partners from a range of scientific disciplines. The ESS ERIC will lead Task 1.3: The human dimension of climate policies: economic and behavioural impacts. The project will run until 30 September 2025.

#### Survey Futures

The ESS HQ has also been involved in a project funded by the Economic and Social Research Council (UK). Survey Futures is implementing a series of tasks to ensure that it remains possible to undertake high quality social surveys in the UK – of the kinds required by the public and academic sectors – to monitor and understand society, and to provide an evidence base for policy, in the future.



## CROSS-NATIONAL ONLINE PANEL (CRONOS)

### ANNUAL ACTIVITY REPORT 2023-24

#### CRONOS-1 (2016-18)

An initial web panel was the first attempt to establish a probability-based CROss-National Online Survey (CRONOS) with a harmonised approach - from the recruitment stage to data processing. This activity was implemented as a pilot study within the Horizon 2020 SERISS project (grant agreement 654221).

Data collection took place between December 2016 and February 2018 with online respondents from Estonia, Great Britain and Slovenia aged 18 or older recruited at the end of Round 8 (2016/17) face-to-face interviews.

Six waves including existing questions from cross-national surveys were fielded via a centrally coordinated system with support from the three relevant national teams.

#### CRONOS-2 (2021-23)

CRONOS-2 was part of the Horizon 2020 ESS-SUSTAIN-2 project (grant agreement 871063). At the end of the ESS Round 10 (2020-22) questionnaire, respondents in 12 countries were invited to participate in the online panel across six waves.

Questions for cross-national waves were selected for inclusion following an open competition. CRONOS-2 successfully scaled up the project to 12 countries, increased website interviewing capacity across Europe and provided data in a timelier manner than the main stage ESS (July 2023).

As part of the project, a Prospectus for a future CRONOS panel, including costs of participation, was produced in February 2024.

#### CRONOS-3 (2024-25)

CRONOS-3 is part of the Horizon Europe Infra4NextGen project (grant agreement 101131118) which began in this reporting period (March 2024).

Questions are being fielded across five waves in 11 countries over the next two years.

In this reporting period, academic experts for the five EU Next Generation themes (digital, equal, green, healthy, strong) have begun working with survey experts within the Core Scientific Team (CST) to construct the questionnaires in online and postal formats.

The first wave will include questions from all five themes and is expected to be fielded in September 2024.

#### Participating countries in all three rounds of CRONOS

##### THREE ROUNDS

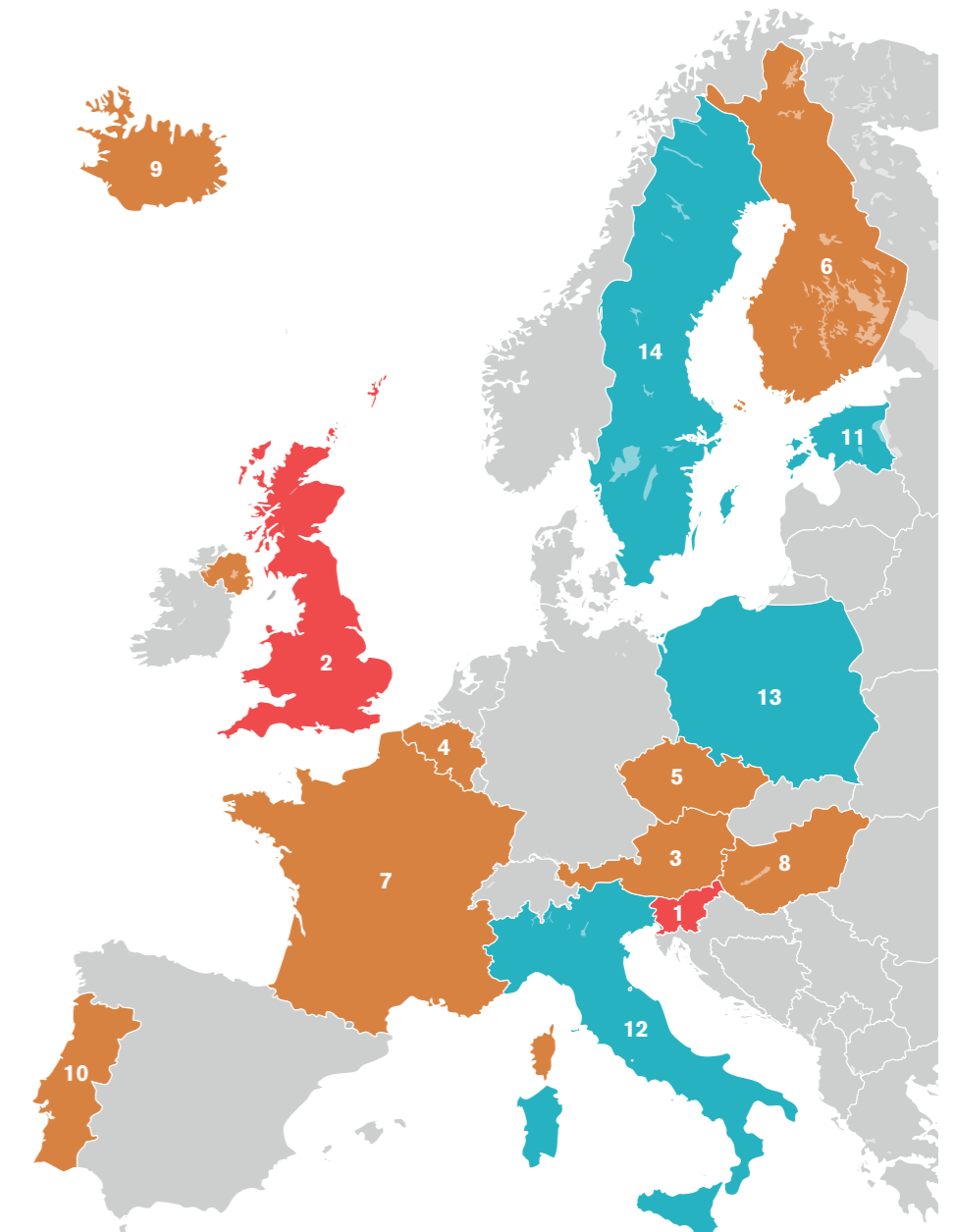
1. Slovenia
2. United Kingdom

##### TWO ROUNDS

3. Austria
4. Belgium
5. Czechia
6. Finland
7. France
8. Hungary
9. Iceland
10. Portugal

##### ONE ROUND

11. Estonia
12. Italy
13. Poland
14. Sweden



# MEDIA AND SOCIAL MEDIA

## ANNUAL ACTIVITY REPORT 2023-24

In total, 1,291 media and online mentions of 'European Social Survey' were monitored between 1 June 2023 and 31 May 2024 (+250 compared with 2022-23).

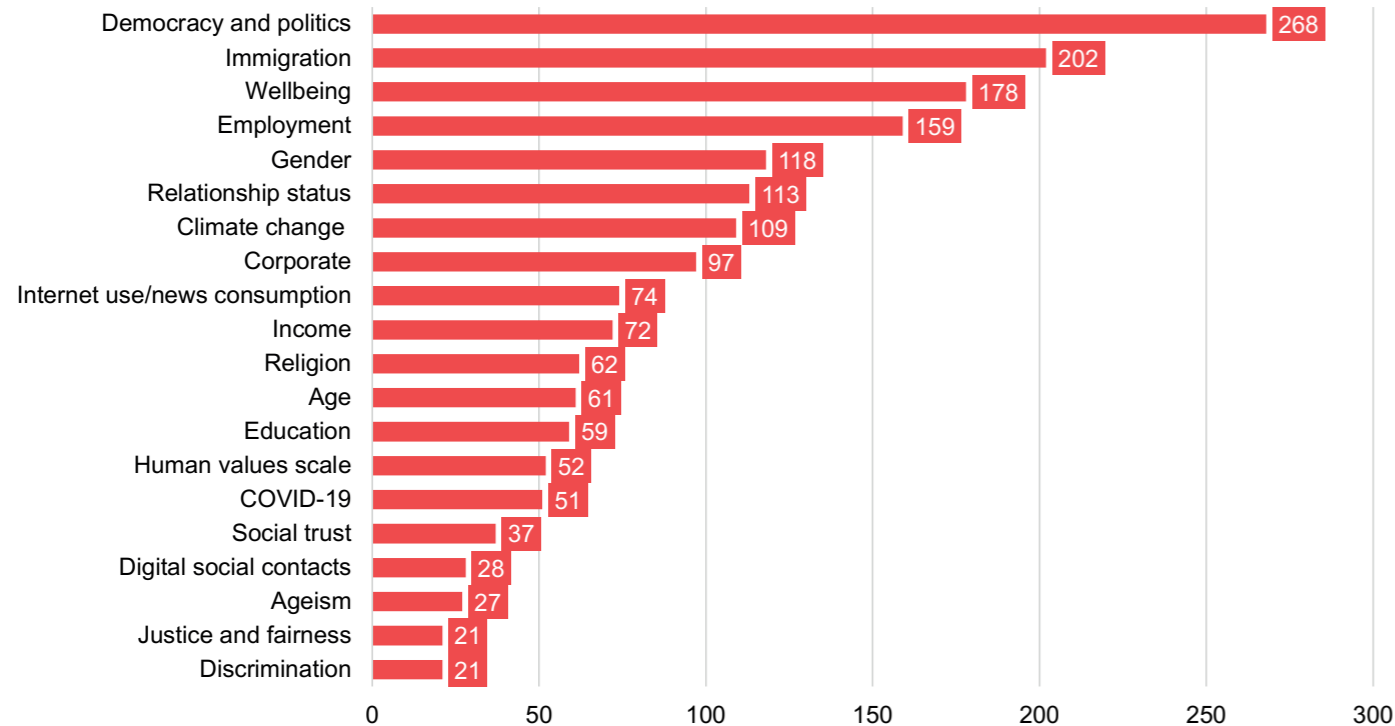
Of the 1,291 mentions, 260 were published by globally or nationally recognisable media

brands with a relatively wide audience (+62 on the previous year). These are coded as Category A publications and account for one in five of all mentions across all seven categories (20.14%).

Articles of all categories were published in 73 different

countries. Portuguese-based media accounted for the highest number of Category A mentions (40), followed by Belgium (27); United Kingdom (21); Spain (18); Italy (12); Hungary (11); Cyprus (9); Lithuania (9); Croatia (8); and Poland (8).

### Media mentions by subject area (2023-24)



Source: D11.3. Annual media monitoring report 2023-24

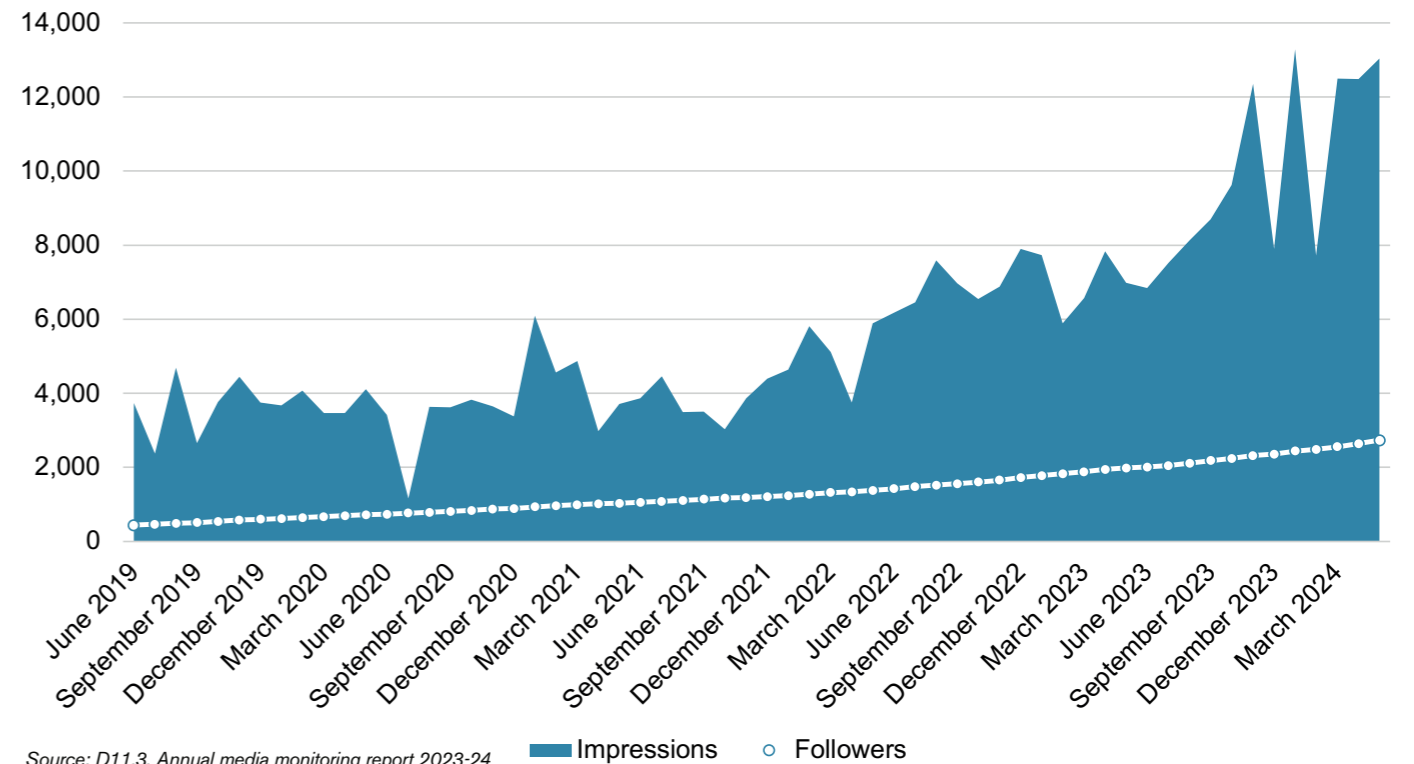
The ESS has four social media profiles: Facebook, LinkedIn, X and YouTube. These channels continue to increase followers year on year, but concerns about whether this increases the number of impressions and engagement continue – especially on Facebook and X. The increase of followers

on LinkedIn and YouTube does appear to increase engagement.

At the end of the reporting period (31 May 2024), there were 2,651 Facebook followers, 2,728 LinkedIn followers, 20,666 X followers and 639 YouTube subscribers (+167).

The graph below shows the relationship between LinkedIn followers and impressions over the past five years. Over the past two years on Facebook and X, increasing followers has not led to increased impressions. In fact, impressions have fallen due to algorithm changes.

### LinkedIn followers and impressions (2019-24)



Source: D11.3. Annual media monitoring report 2023-24

Impressions Followers

DISSEMINATION

DISSEMINATION

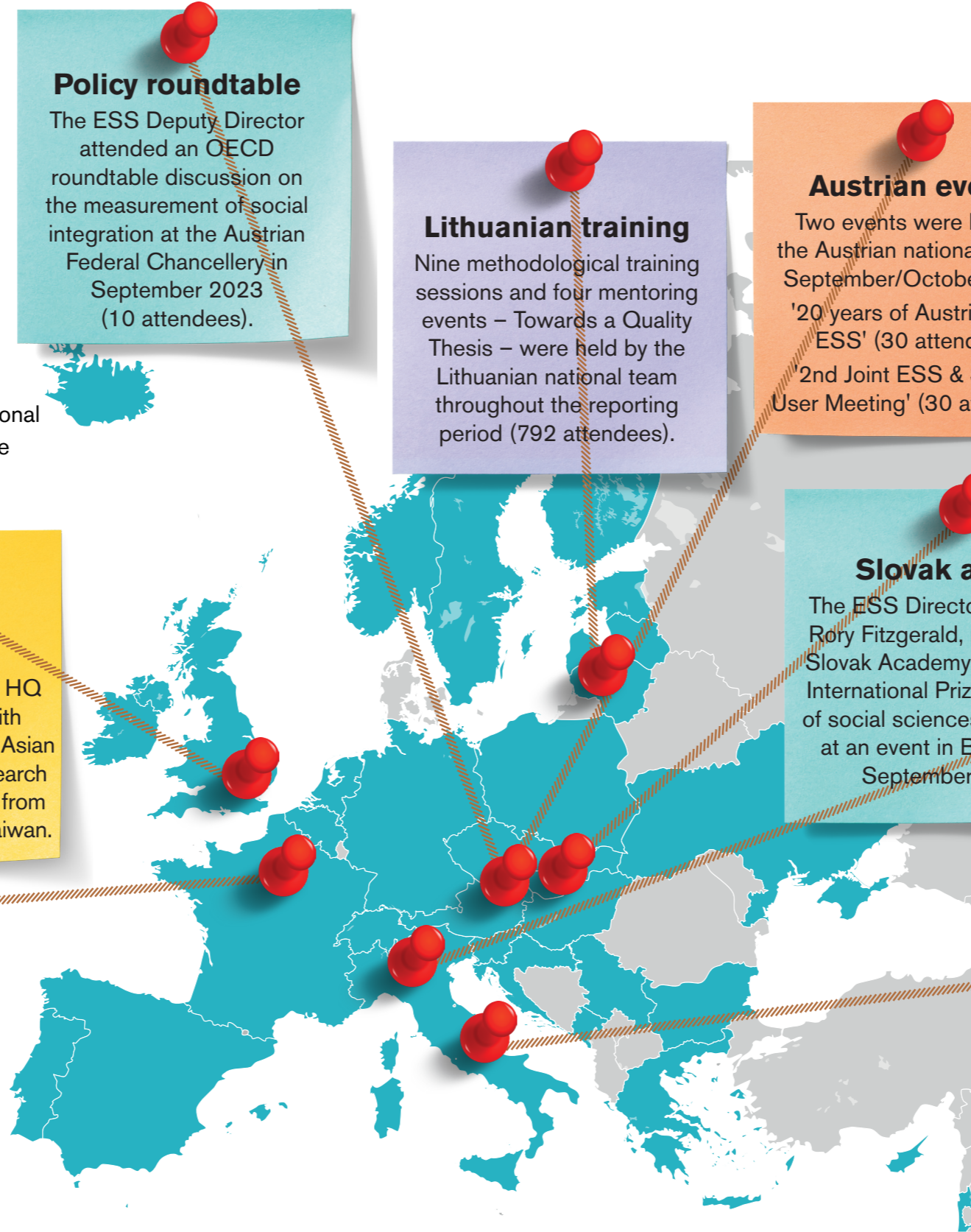
## SELECTED EVENTS

### ANNUAL ACTIVITY REPORT 2023-24

The ESS has organised, delivered and attended many events during the reporting period, mainly online.

ESS HQ has delivered 13 online events during the period: nine survey methods webinars; two online launch events for new Topline reports (on democracy and digital social contacts); and the annual Sir Roger Jowell Memorial Lecture on attitudes towards immigration (held in-person and online). These were viewed by more than 1,000 attendees.

A selection of other events held - or attended - by representatives of the CST, national funders and/or national teams are highlighted on the map.



#### Policy roundtable

The ESS Deputy Director attended an OECD roundtable discussion on the measurement of social integration at the Austrian Federal Chancellery in September 2023 (10 attendees).

#### Lithuanian training

Nine methodological training sessions and four mentoring events – Towards a Quality Thesis – were held by the Lithuanian national team throughout the reporting period (792 attendees).

#### Austrian events

Two events were held by the Austrian national team in September/October 2023. '20 years of Austria in the ESS' (30 attendees) 2nd Joint ESS & SHARE User Meeting' (30 attendees)

#### Webinars

9 survey methods webinars (868 attendees).  
2 Topline reports online launch events (88 attendees).  
1 Sir Roger Jowell Memorial Lecture (139 attendees).

#### ESS-EASS Conference

In January 2024, the ESS HQ hosted a Conference with representatives of the East Asian Social Survey (EASS) research network including surveys from China, Japan, Korea and Taiwan.

#### Slovak award

The ESS Director, Professor Rory Fitzgerald, received the Slovak Academy of Sciences International Prize in the area of social sciences and culture at an event in Bratislava in September 2023.

#### ESRA 2023

The ESS had an exhibition stand at the 2023 European Survey Research Association (ESRA) Conference in Milan. CST members and NCTs delivered presentations on a range of topics during the event (17-21 July 2023).

#### French workshop

The French national team organised a joint workshop with the Survey of Health, Ageing and Retirement in Europe (SHARE) at Paris Dauphine University on 4 March 2024 (60 attendees).

#### Italian seminar

An event – Round 10 of the European Social Survey – Main Findings in a comparative perspective – showcased analysis of Round 10 data was held by the Italian national team in September 2023 (30 attendees).

DISSEMINATION

DISSEMINATION

# USER STATISTICS

## ANNUAL ACTIVITY REPORT 2023-24

The total number of registered ESS data users at 31 May 2024 is 237,048.

The users include academics, government and non-governmental organisations, think tanks, journalists, students and private individuals.

The ESS User Statistics document the number of people who have accessed data since Round 1 in 2002 to date. Two groups of users are reported:

“Registered users” – people who complete a short registration to access data.

“ESS data downloaders” – registered users who have downloaded an ESS dataset on at least one occasion.

ESS User Statistics are publicly available via the ESS website and updated periodically, include tables showing numbers of

registered users and ESS data downloaders by country, user type and data type (ESS round, cumulative data, multilevel data or data collected as part of Horizon 2020 or Horizon Europe projects).

October 2023 saw the highest number of users who

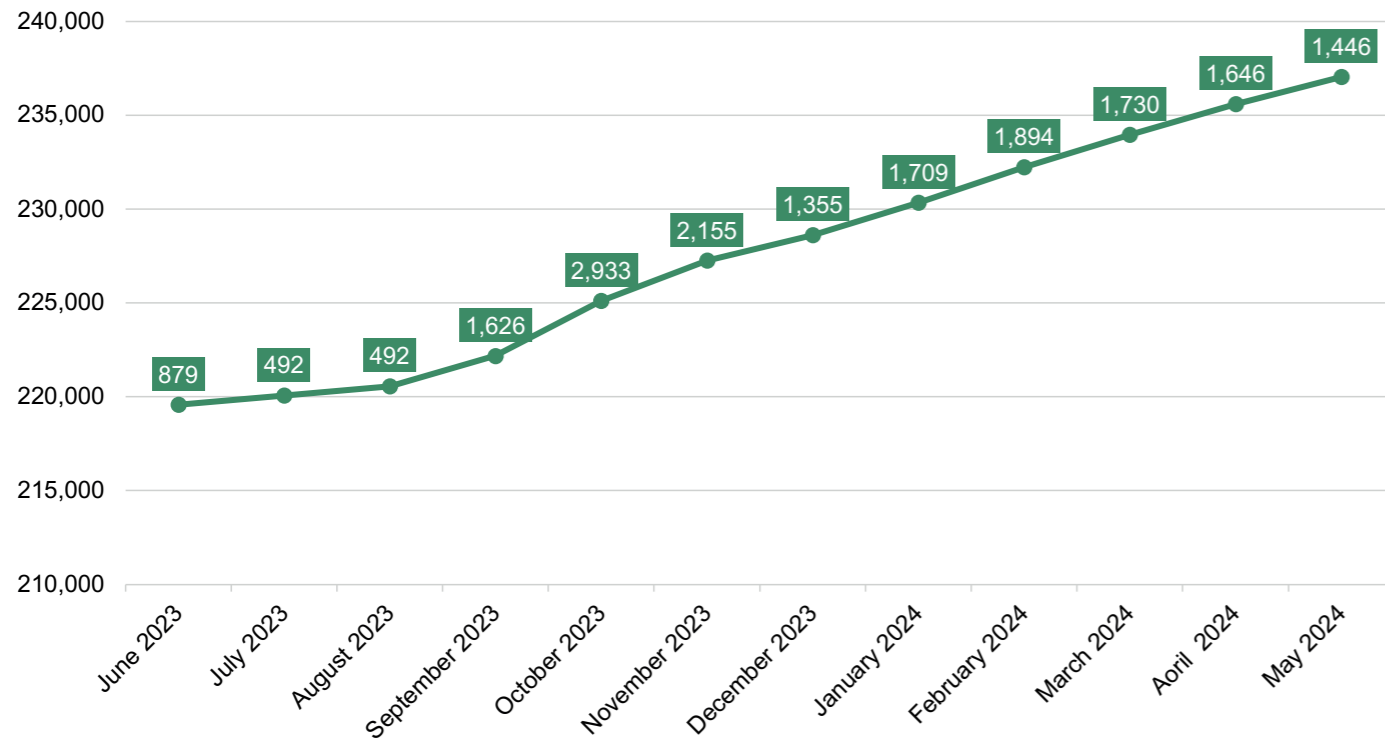
registered to access data (2,933) with only 492 users registering in both July and August 2023.

The proportion of user by activity is: Student (70.6%), Faculty and research (15.6%), PhD thesis (5.9%), Private individual (2.8%), Other

(1.3%), Organisation (ngo) (1.3%), Government (1.1%), Private enterprise (0.9%) and Journalist (0.3%).

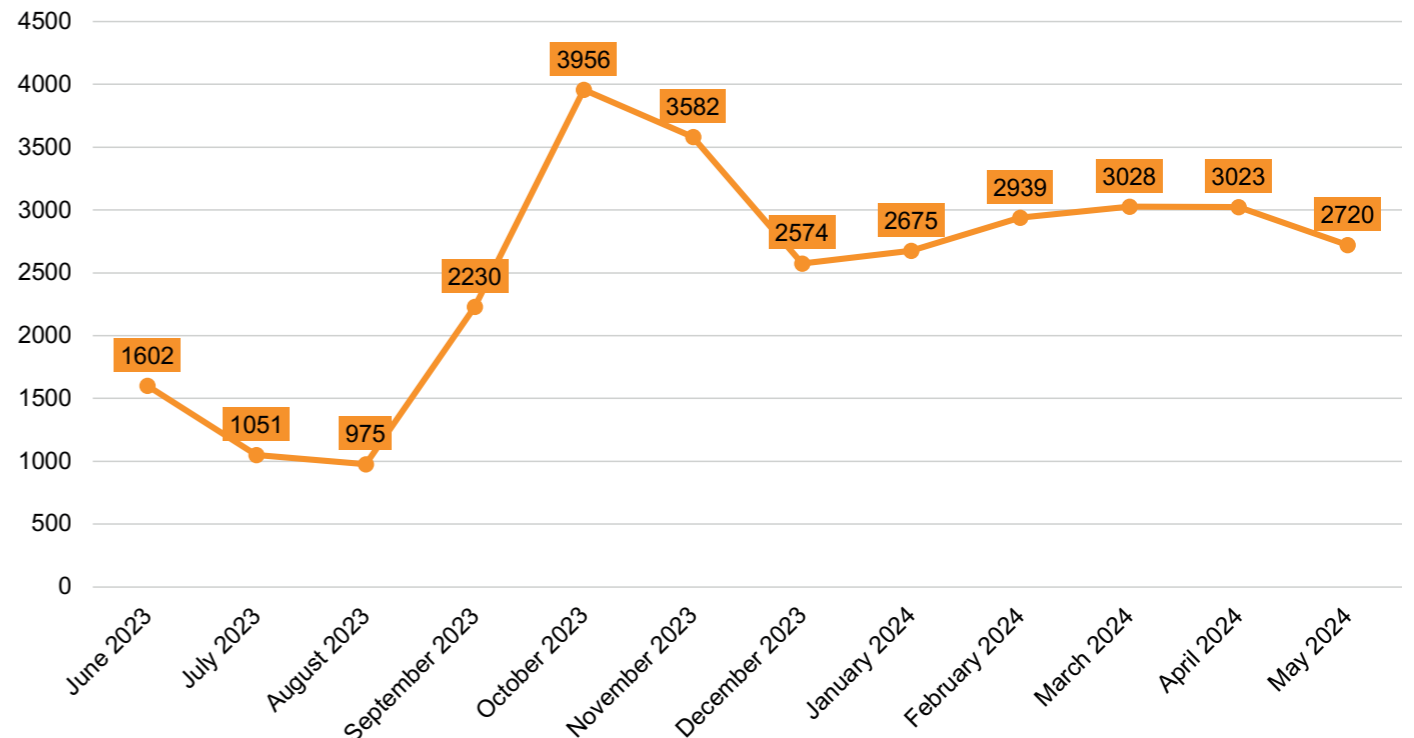
User Statistics now include the number of active downloaders each month. Over the reporting period, 30,355 users downloaded ESS data.

Registered users, cumulative and monthly (2023-24)



Source: User statistics [accessed 31 May 2024]

Active downloaders (2023-24)



Source: User statistics [accessed 31 May 2024]

DISSEMINATION

DISSEMINATION

# ACADEMIC IMPACT

## ANNUAL ACTIVITY REPORT 2023-24

A review of academic articles listed on Google Scholar that include primary analysis of ESS data is conducted every year.

In the latest review, conducted in January 2024, 475 new publications were identified up to and including the 2023 calendar year. This means

that the overall number English language ESS based publications is now 7,060, with 6,279 substantive, and 781 methodological.

The latest publication year, 2023, is currently incomplete as approximately 10% of journal articles typically

appear in next year's searches due to the time gap between advanced electronic publication and final publication.

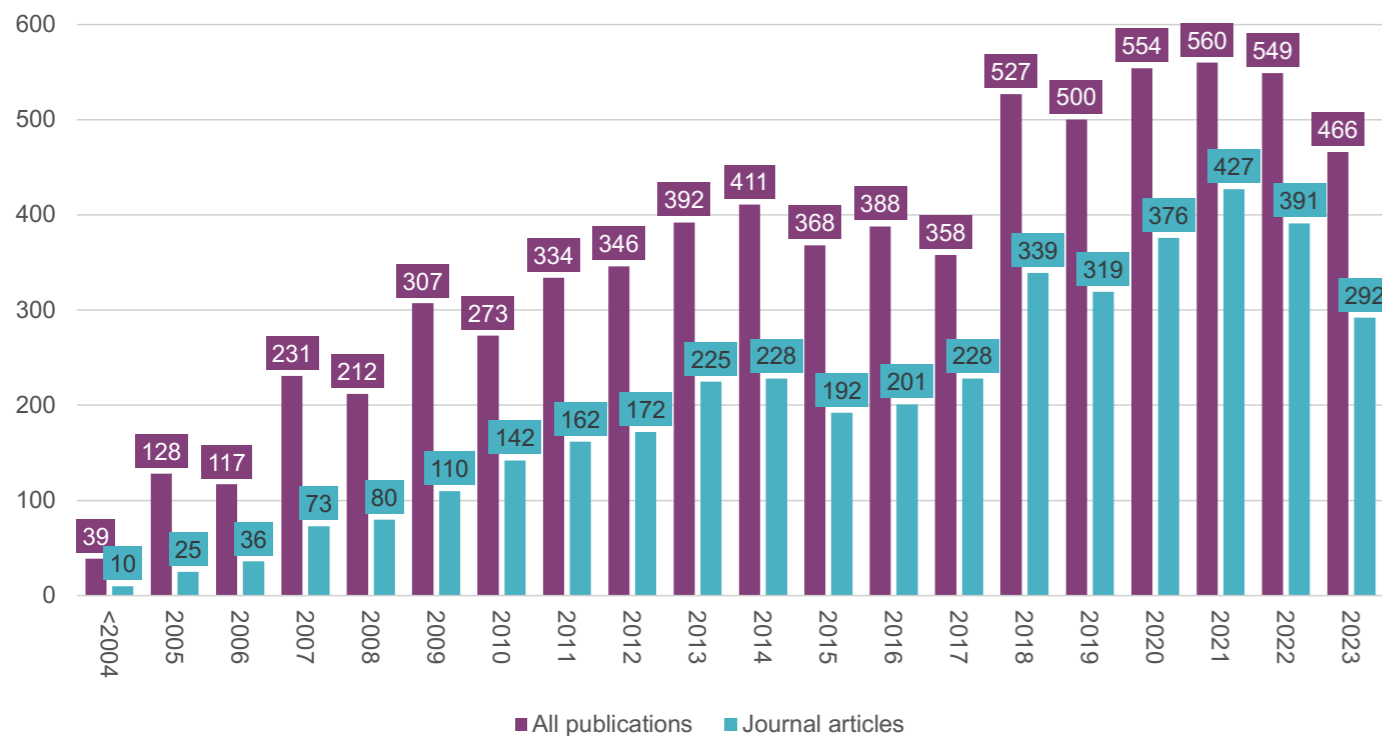
Nevertheless, there appears to be a temporary decline in the number of publications after 2021.

Several factors could contribute to this trend: such as a decrease following the peak of COVID-19 publications, delays in publishing Round 10 data or the ageing of key sociological modules such as Family, Work and Wellbeing, and Immigration.

Among substantive publications, the topic most frequently addressed by far, remains politics. The second largest topic is immigration, which is a continuously pressing social issue facing European countries.

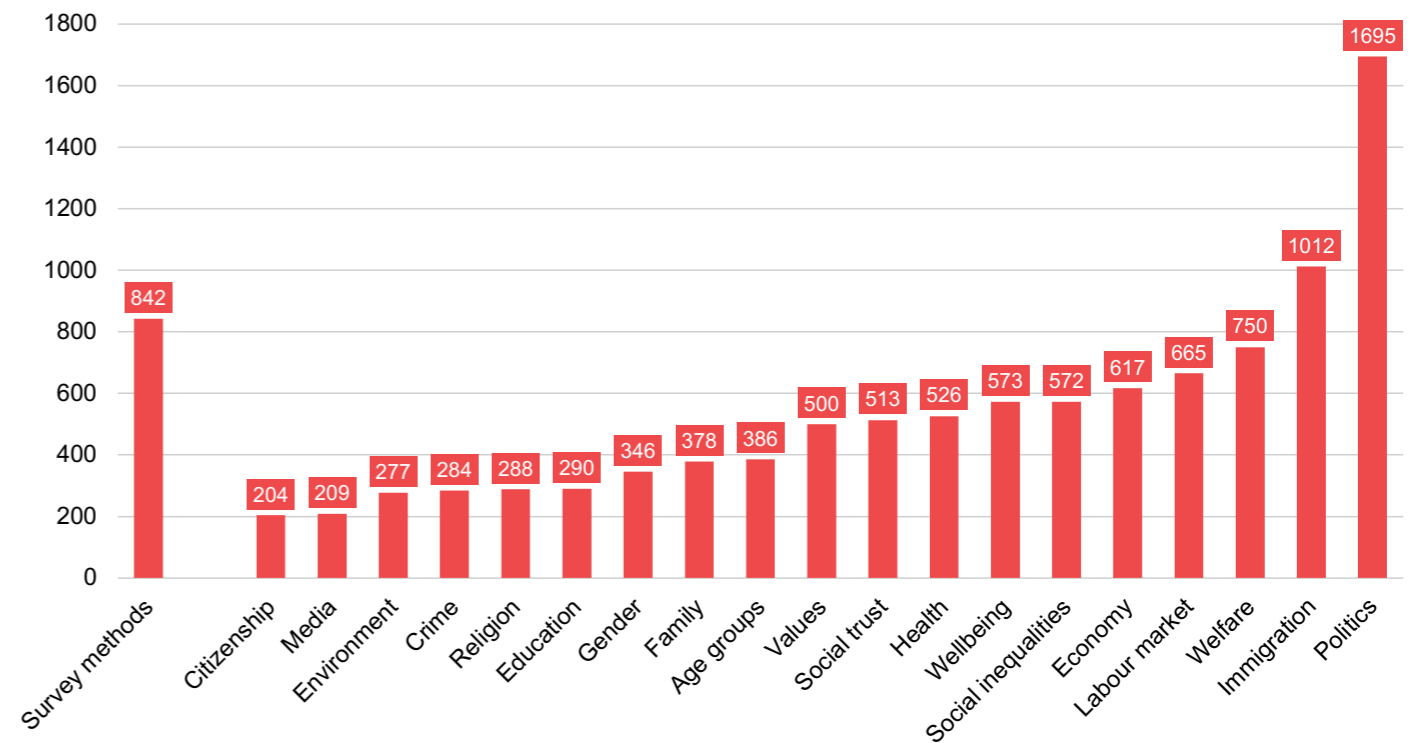
Other prominent topics include public policies and welfare, work-life conflict, macroeconomic conditions, and lately, health and environmental issues, each comprising a 10% share of publications in the last two publishing years.

English-language publications that analyse ESS data



Source: D11.7. Bibliographic indexing report

Topics (2003-23, based on 7,060 publications)



Source: D11.7. Bibliographic indexing report

DISSEMINATION

DISSEMINATION

## OTHER DISSEMINATION ACTIVITIES

### ANNUAL ACTIVITY REPORT 2023-24

#### New website

The ESS website underwent a major redesign, culminating in a relaunch of the site in September 2023.

The previous design had been launched in October 2013 and was an amalgamation of two websites, incorporating public facing content and data access sites previously hosted separately. With the launch of the ESS Data Portal in March 2022, this new site acts as a gateway to the data.

The new site was designed to offer a more modern, clean and accessible website than the previous iteration. It was designed in accordance with the Web Content Accessibility Guidelines (WCAG2).

In this reporting period, the website was visited on 456,720 occasions.

#### Website news

During the reporting period, 29 news articles were published to the website.

The new site allows for news items to be tagged in relevant areas. These categories are:

- Call: All calls for abstracts/sessions, advisory boards, rotating modules, etc.
- Corporate: All information about the ESS, including events and global links
- Data: Releases and announcements related to data access
- Events: Event listings
- Fieldwork: Updates related to the implementation of surveys
- Impact: Information about academic, non-academic, teaching and policy impacts
- Methods: News about survey methods
- Questionnaire: Information about the questionnaire
- Reports: News about reports

#### User bulletin

The ESS User Bulletin was relaunched in September 2022. Users who register to access ESS data are asked to opt-in to a monthly newsletter sent via email.

This monthly bulletin incorporates all website news, event listings and any other relevant information proposed by the CST or national teams.

In the reporting period, 11 editions of the bulletin were distributed to subscribers. The June 2023 edition was sent to 18,599 subscribers. The May 2024 edition was sent to 20,766 subscribers.

It remains the single largest channel available for the direct communication to users of ESS news, activities and information.

A distribution list is also available for the promotion of events.

#### ESS Conference

Preparations have been taking place throughout the reporting period for the 5th International ESS Conference being held at ICS - University of Lisbon and ISCTE - University Institute of Lisbon, Portugal, from 8-10 July 2024.

38 sessions were selected following an open call for sessions in August 2023. Following the publication of a call for papers (December 2023), 325 abstracts were submitted.

During the reporting period, a meeting was held with organising committee members in January 2024. Following an initial review of submitted papers by the Committee, and a second review by session chairs, it is expected that 250 papers will be presented.

Keynote speakers were also selected in this period.

#### Jowell-Kaase Prize

In May 2024, Dr. Jule Adriaans (Bielefeld University) was selected as the latest winner of the Jowell-Kaase Early Career Researcher Prize.

An open call for nominations was published on the ESS website and disseminated in February 2024. Following the deadline for nominations (March 2024), a prize committee formed of members of the Scientific Advisory Board (SAB) and ESS Conference organising committee reviewed eight nominations.


The recipient was notified of the award selection in May 2024 and the news was announced on the ESS website. As part of the prize, Dr. Adriaans will receive €1,000 and deliver a keynote speech on social inequality at the upcoming conference.

#### ESS Prospectus

An updated Prospectus was published in March 2024.

The ESS produced a Prospectus as part of the Horizon 2020 ESS-SUSTAIN-2 project (grant agreement 871063) in February 2017.

At the time, the ESS only had 19 member countries and the Prospectus was printed and translated to promote membership of the survey in guest countries. Since it was published, the ESS has gained nine new members.

The refreshed Prospectus includes information about the history, organisational structure, participating in the ESS, scientific and funding requirements, as well as details about how to access data and the results of analysis. 

# GOVERNANCE AND OPERATIONS

## ANNUAL ACTIVITY REPORT 2023-24

### Core Scientific Team

The most notable change to the governance and operations in the reporting period is the addition of Centerdata to the Core Scientific Team (CST) at the beginning of the 2023-25 work programme.

Centerdata – an independent research institute based at Tilburg University (Netherlands) – are playing a key role in the move of data collection from in-person interviews to a ‘self-completion’ design.

The organisation has a wealth of experience in developing comprehensive data collection tools for cross-national surveys, including for the Survey of Health, Ageing and Retirement in Europe (SHARE) and ESS face-to-face methods in the past.

Centerdata are therefore developing a platform to centralise online data

collection for use across all ESS countries to help improve efficiency and data quality.

Their tools are also facilitating the centralised implementation of the ESS self-completion paper questionnaire.

Centerdata becomes the eighth institute on the CST, alongside City, University of London (UK), GESIS - Leibniz Institute for the Social Sciences (Germany), Sikt - Norwegian Agency for Shared Services in Education and Research (Norway), SCP - The Netherlands Institute for Social Research (Netherlands), Universitat Pompeu Fabra (Spain), University of Essex (UK) and University of Ljubljana (Slovenia).

### General Assembly Chair

Professor Ann-Helén Bay (Oslo Metropolitan University) was appointed Chair following a vote of the ESS

General Assembly at a virtual extraordinary meeting in October 2023.

Professor Bay becomes only the second Chair of the ESS General Assembly, replacing Professor Michael Breen who was appointed when the project became a European Research Infrastructure Consortium (ERIC) in 2013.

Professor Bay chaired the first meeting of the new tenure at the General Assembly meeting at The Hague in The Netherlands in November 2023.

### Advisory Boards

National representatives at the extraordinary meeting of the General Assembly (October 2023) also voted to increase the membership size of both the Methods Advisory Board (MAB) and Scientific Advisory Board (SAB).

Additionally, a vote was held to revise the membership of these boards. Half of the existing members of the MAB and SAB retained their places and new members were appointed following a vote of GA members. The composition of the Boards is listed in Annex 2.

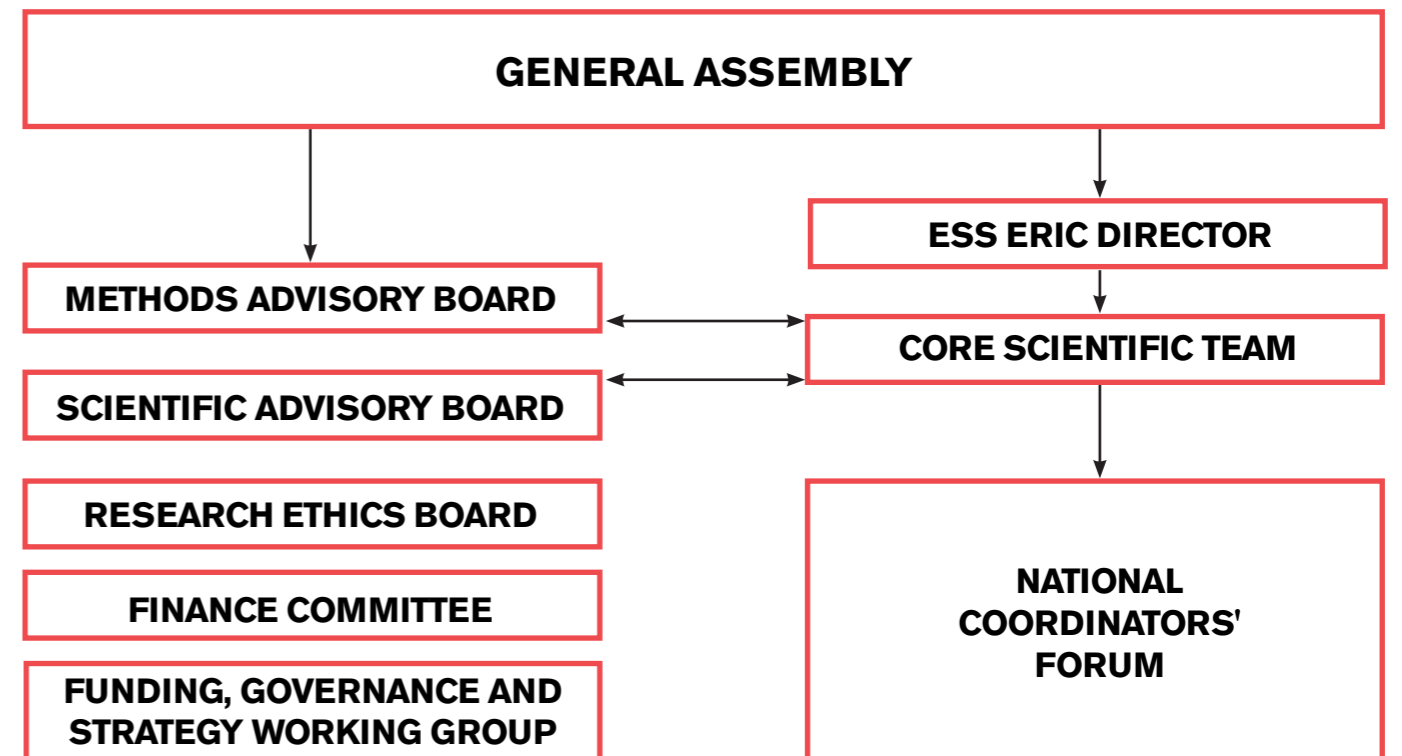
### Host agreement extended

It was agreed at the General Assembly meeting in April 2024 that the ESS ERIC would continue to be hosted by the UK with the HQ at City, University of London until 2029. The 2025-29 agreement also included the four-year reappointment of ESS Director, Professor Rory Fitzgerald.

### Work programme

A decision was made by the General Assembly to increase the work programme period from two to four years. As such the subsequent work programme will cover the period 2025-29 and will incorporate the objectives of the 2025-29 Strategic Plan.

### Governance of the ESS ERIC



GOVERNANCE AND OPERATIONS

GOVERNANCE AND OPERATIONS

# GOVERNANCE AND OPERATIONS

## ANNUAL ACTIVITY REPORT 2023-24

### ESS ERIC Work Programme 2021-23: Deliverables submitted 2023-24

| DELIVERABLE   |
|---|
| 1.3. Collected minutes and action points from Scientific Advisory Board (SAB) meetings  |
| 1.4. Collected minutes and action points from Methods Advisory Board (MAB) meetings     |
| 1.10. Minutes and action points from Core Scientific Team (CST) meetings                |
| 2.11. ESS10 2nd release country quality reports   |
| 2.12. ESS10 overall quality report  |
| 2.13. Backend repository of headline indicators   |
| 2.6. Minutes and meeting papers NCF21   |
| 3.4. Weights for Round 10 second release  |
| 3.5. Technical report on Round 10 weighting   |
| 3.6. Integrated sample design indicators  |
| 4.2. Round 11 design documentation for rotating modules                                 |
| 5.1. Translation Q&A file   |
| 5.6. ESS11 Report on verification   |
| 5.7. Findings of Round 11 Survey Quality Predictor (SQP) coding                         |
| 5.10. ESS10 Report on changes to existing translations                                  |
| 5.11. ESS11 Translation poll  |
| 6.2. Evaluation of measurement quality and cross-country comparison of complex concepts |

| DELIVERABLE  |
|--|
| 7.2. ESS11 Fieldwork Questionnaire Data  |
| 7.6. Minutes of Fieldwork Team (FWT) calls   |
| 7.7. Final outcome code variable for R10   |
| 7.9. Notes from Field Directors meeting  |
| 7.13. ESS Round 10 Video Interviewing Report   |
| 8.1. Cumulative Report on poor interviewer behaviour analysis                            |
| 8.2. Report on Desirable Interviewer Behaviour (DIB) contacting and selection procedures |
| 8.3. Demo apps delivered   |
| 8.5. Tool for analysis of interim main data set  |
| 8.6. Tool for analysis of Contact Forms Data via Fieldwork Management System (FMS)       |
| 9.3. Cumulative data ESS 1-10 data and meta data   |
| 9.4. ESS Multilevel Data content updated   |
| 9.5. ESS Round 11 anonymisation guidelines   |
| 9.6. Activity report   |
| 10.4. Launch of new ESS website  |
| 11.3. 2 x Topline Findings Series publications   |
| 11.6. Media monitoring report  |
| 11.8. Marketing activity   |
| 11.9. Public affairs activity  |
| 12.3. myESS maintenance - technical specifications                                       |
| 12.5. myESS repository (updated version)   |

### Data Protection

The Data Protection Officer presents a regular report on data protection activities at ESS General Assembly meetings. This report includes recommendations for action, as appropriate. Together with the ESS, the DPO undertook activities to ensure ESS ERIC compliance with applicable data protection law throughout 2023-24.

Round 10 raw data has been encrypted and moved to a designated folder for long term storage in accordance with the Data Management Plan.

Support has been extended to many countries in relation to the deposit and processing

of Round 11 data to ensure compliance with GDPR requirements.

The anonymisation guide was updated according to feedback from a deliverable review and published on myESS.

Efforts to develop and implement GDPR-compliant policies specific to data processing for Round 12 have been initiated.

One breach of confidentiality has been reported to the DPO. The DPO concluded that the breach was unlikely to result in a risk to rights and freedoms of the data subjects and did not need to be notified to the supervisory authority.

Communications between the archive and national teams will be reviewed for Round 12 in order to avoid similar breaches in the future.

### Deliverables

As a result of the delayed implementation of the 2021-23 work programme due to COVID-19, the deadline for deliverable submission was extended to December 2023.

For 2021-23 work programme deliverables that were submitted in this reporting period (2023-24), the deliverable number and title is listed in the table to the left.

A list of deliverables submitted in the first year of the 2023-25 work programme is below.

### ESS ERIC Work Programme 2023-25: Deliverables submitted 2023-24

| TITLE OF DELIVERABLE   |
|--|
| 1.2. Reports to General Assembly and European Commission on 2022-23 activities           |
| 2.1. ESS Round 12 Survey Specification for ESS ERIC Member, Observer and Guest countries |
| 2.3. Round 12 Timetable for the Core Scientific Team                                     |
| 3.1. Sampling guidelines for Round 12  |

| TITLE OF DELIVERABLE  |
|---|
| 9.2. Edition 1 of core and rotating modules data (MS) and meta data from ESS11  |
| 10.6. Report on treatment of country-specific items in self-completion platform |
| 11.6. ESS annual bibliographic report 2023, with appendices                     |
| 11.7. Bibliographic indexing report   |



# GOVERNANCE AND OPERATIONS

## ANNUAL ACTIVITY REPORT 2023-24

### Meetings

All statutory meetings of the ESS were held in the reporting period, detailed in the table below.

An extra grouping, the Troika, comprising the Host Country representative, the Host Institution and the Chair of the General Assembly have met

periodically during the project. During the reporting period, the Troika met on one occasion.

### Meetings of the ESS ERIC 2023-24

|  | Jun '23 | July '23 | Aug '23 | Sep '23 | Oct '23 | Nov '23 | Dec '23 | Jan '24 | Feb '24 | Mar '24 | Apr '24 | May '24 |
|--|---------|----------|---------|---------|---------|---------|---------|---------|---------|---------|---------|---------|
| <b>General Assembly (GA)</b>                                 |         |          |         |         |         |         |         |         |         |         |         |         |
| <b>Scientific Advisory Board (SAB)</b>                       |         |          |         |         |         |         |         |         |         |         |         |         |
| <b>Methods Advisory Board (MAB)</b>                          |         |          |         |         |         |         |         |         |         |         |         |         |
| <b>Finance Committee (FINCOM)</b>                            |         |          |         |         |         |         |         |         |         |         |         |         |
| <b>Funding, Governance and Strategy Working Group (FGWG)</b> |         |          |         |         |         |         |         |         |         |         |         |         |
| <b>Research Ethics Board (REB)</b>                           |         |          |         |         |         |         |         |         |         |         |         |         |
| <b>Core Scientific Team (CST)</b>                            |         |          |         |         |         |         |         |         |         |         |         |         |
| <b>National Coordinators' Forum (NC Forum)</b>               |         |          |         |         |         |         |         |         |         |         |         |         |

### Country contributions to central costs of ESS ERIC

| COUNTRY                   | CONTRIBUTION 2022-23 (€) | CONTRIBUTION 2023-24 (€) |
|---------------------------|--------------------------|--------------------------|
| Hosting Fee               | 400,000                  | 408,000                  |
| Austria                   | 66,247                   | 68,780                   |
| Belgium                   | 74,951                   | 78,522                   |
| Bulgaria                  | 22,500                   | 25,000                   |
| Croatia                   | 22,500                   | 25,000                   |
| Cyprus                    | 22,500                   | 25,000                   |
| Czechia                   | 46,350                   | 50,201                   |
| Estonia                   | 22,500                   | 25,000                   |
| Finland                   | 49,081                   | 52,117                   |
| France                    | 291,428                  | 292,998                  |
| Germany                   | 404,629                  | 411,261                  |
| Hungary                   | 22,500                   | 25,000                   |
| Iceland                   | 22,500                   | 25,000                   |
| Ireland                   | 59,261                   | 67,754                   |
| Israel                    | 59,642                   | 66,560                   |
| Italy                     | 223,632                  | 218,932                  |
| Latvia                    | 22,500                   | 25,000                   |
| Lithuania                 | 22,500                   | 25,000                   |
| Netherlands               | 110,663                  | 116,804                  |
| Norway                    | 63,540                   | 65,364                   |
| Poland                    | 79,277                   | 85,338                   |
| Portugal                  | 45,826                   | 47,691                   |
| Serbia                    | 22,500                   | 25,000                   |
| Slovakia                  | 22,500                   | 25,000                   |
| Slovenia                  | 22,500                   | 25,000                   |
| Spain                     | 158,139                  | 157,432                  |
| Sweden                    | 76,540                   | 80,004                   |
| Switzerland               | 91,842                   | 99,194                   |
| UK                        | 299,978                  | 309,981                  |
| <b>ERIC Annual Budget</b> | <b>2,667,887</b>         | <b>2,951,935</b>         |

# FINANCES

## ANNUAL ACTIVITY REPORT 2023-24

### Financial audit: 2023-2024

Wenn Townsend was appointed to carry out the audit of ESS ERIC's finances for the period 1 June 2023 – 31 May 2024. The scope of the audit included the ESS ERIC Work Programmes and the EU Horizon 2020 and

Horizon Europe projects which ESS ERIC coordinates and participates as a beneficiary.

The audit was undertaken in July/August 2024 and its findings reported to the Financial Committee (FINCOM) at its meeting on 13 September 2024. The

recommendation of FINCOM for the adoption of the Audit Report was communicated to the General Assembly at its 28th meeting on 16 October 2024. The General Assembly adopted the Audit Report at this meeting.

### Opinion

The Independent auditor's report to the General Assembly of the European Social Survey European Research Infrastructure Consortium (ESS ERIC) stated:

*"We have audited the financial statements of European Social Survey European Research Infrastructure Consortium (the 'ERIC') for the year ended 31 May 2024 which comprise the statement of comprehensive income, the statement of financial position, the principal accounting policies and the notes to the financial statements.*

*"The financial reporting framework that has been applied in their preparation is applicable law and United Kingdom Accounting Standards, including section 1A of Financial Reporting Standard 102 'The Financial Reporting Standard applicable in the UK and Republic of Ireland' (United Kingdom Generally Accepted Accounting Practice).*

*"In our opinion, the financial statements:*

- give a true and fair view of the state of the ERIC's affairs as at 31 May 2024 and of its income and expenditure for the year then ended; and*
  - have been properly prepared in accordance with United Kingdom Generally Accepted Accounting Practice.*
- (Opinion, 16 October 2024)"*

The audited accounts are presented in Annex 4.

**“ The audit was undertaken in July/ August 2024 and its findings reported to the Financial Committee (FINCOM) at its meeting on 13 September 2024. ”**

**“ In our opinion, the financial statements.... give a true and fair view of the state of the ERIC's affairs as at 31 May 2024 and of its income and expenditure for the year then ended... ”**

# ANNEX 1

## ESS ERIC GENERAL ASSEMBLY: NATIONAL REPRESENTATIVES

Members of the ESS ERIC General Assembly are represented by a National Representative.

The Chair of the General Assembly is Professor Ann-Helén Bay, Oslo Metropolitan University, who was appointed in October 2023, following an open call for nominations published in June 2023.

Professor Bay becomes only the second Chair of the ESS General Assembly, replacing Professor Michael Breen who was appointed when the project became a European Research Infrastructure Consortium (ERIC) in 2013.

The Deputy Chair is Dr. Susanna Bylin, Swedish Research Council, Sweden. Dr. Bylin was elected for a four-year term at the GA meeting of 20 October 2021.

The other representatives at 31 May 2024 were:

**Austria:** Julia Prikoszovits, Federal Ministry of Education, Science and Research

**Belgium:** Bart Dumolyn, delegated representative from the Flemish Department of Economy, Science and Innovation (representing the Flemish Community); Aziz Naji, delegate for the FPS Science policy (representing the federal government); and Florence Vandendorpe, delegated representative from the Federation Wallonia-Brussels (representing the French-speaking Community)

**Bulgaria:** Yumer Kodzhayumer, Science Directorate, Ministry of Education and Science

**Croatia:** Staša Skenžić, Ministry of Science and Education

**Cyprus:** Marinos Costi, Deputy Ministry for Research, Innovation and Digital Policy

**Czechia:** Naďa Drizga, Ministry of Education, Youth and Sports

**Estonia:** Marion Pajumets, Ministry of Social Affairs

**Finland:** Päivi Messo, Academy of Finland

**France:** Francis Bloch, Paris School of Economics, on behalf of the French Ministry of Higher Education, Research and Innovation

**Germany:** Katharina Pijnenburg, Federal Ministry of Education and Research

**Hungary:** Tamás Takács, National Research, Development and Innovation Office

**Iceland:** Guðbjörg Andrea Jónsdóttir, University of Iceland

**Ireland:** Dr Marina Milic, Irish Research Council

**Israel:** Dr Alex Altshuler, Ministry of Science and Technology

**Italy:** Sebastiano Fadda, National Institute for Public Policy Analysis (INAPP)

**Latvia:** Diāna Laipniece, Ministry of Education and Science

**Lithuania:** Associate Professor Aurelija Stelmokienė, delegated representative of the Research Council of Lithuania

**Montenegro:** Marica Melović, Ministry of Education, Science and Innovation

**Netherlands:** Netherlands Organisation for Scientific Research

**Norway:** Ministry of Education and Research, represented by Siv Johnsen Soriano, Research Council of Norway

**Poland:** Anna Głąbska, Ministry of Science and Higher Education

**Portugal:** Analia Torres, University of Lisbon

**Serbia:** Ministry of Education, Science and Technological Development, represented by Dr. Goran Bašić, Institute of Social Sciences

**Slovak Republic:** Simona Foltinová, Ministry of Education, Science, Research and Sport of the Slovak Republic

**Republic of Slovenia:** Dr. Albin Kralj, Ministry of Higher Education, Science and Innovation (MVZI)

**Spain:** Maríán Rodríguez Parrilla, Ministry of Science, Innovation and Universities

**Sweden:** Susanna Bylin, delegated representative from the Swedish Research Council

**UK:** Beccy Shipman, Economic and Social Research Council, UK Research and Innovation (Host Country)

**Switzerland** is an Observer and is represented by Lea Bühlmann, State Secretariat for Education, Research and Innovation.

Countries with Guest status in Round 10 included **Greece**, represented by Dr. Nicolas Demertzis, National Centre for Social Research (EKKE), **Montenegro**, represented by Professor Ilija Vujačić, Montenegrin Academy of Sciences and Arts, and **North Macedonia**, represented by Borco Aleksov, Ministry of Education and Science.

Countries with Guest status in Round 11 include **Greece**, represented by the Hellenic Foundation for Research & Innovation and **Ukraine**, represented by Dmytro Zavgorodniy, Vice Minister of Education & Science - funded by the ESS General Assembly.

## ANNEX 2

### MEMBERSHIP OF THE COMMITTEES OF THE ESS ERIC GENERAL ASSEMBLY

#### Scientific Advisory Board (SAB) at 31 May 2024

The Scientific Advisory Board (SAB) comprises 10 members, appointed by the General Assembly following nominations from its Members.

- Chair: Caroline Rapp (University of Copenhagen, Denmark)
- Dana Hamplová (Czech Academy of Sciences, Czechia)
- Karsten Hank (University of Cologne, Germany)
- Hester van Herk (Vrije Universiteit Amsterdam, Netherlands)
- Elisabeth Ivarsflaten (University of Bergen, Norway)
- Willem de Koster (Erasmus University Rotterdam, Netherlands)
- Luisa Lima (ISCTE - University Institute of Lisbon, Portugal)
- Kjell Gunnar Salvanes (NHH Norwegian School of Economics, Norway)

• Åsa von Schoultz (University of Helsinki, Finland)

• Tom Smith (National Opinion Research Center at the University of Chicago, USA)

The ESS ERIC Director, Professor Rory Fitzgerald (ESS ERIC HQ at City, University of London) and the ESS ERIC Deputy Director - Scientific, Dr. Angelika Scheuer (Core Scientific Team - GESIS) attend SAB meetings as observers.

#### Methods Advisory Board (MAB) at 31 May 2024

The Methods Advisory Board (MAB) advises the General Assembly, the Director and the Core Scientific Team on technical and methodological aspects of the survey. It comprises eight members, appointed by the General Assembly following nominations from its members.

• Professor Michael Bosnjak, University of Trier, Germany, Germany

• Dr. Marieke Haan (University of Groningen, Netherlands)

• Professor Johan Martinsson (Department of Political Science, University of Gothenburg, Sweden)

• Dr. Olga Maslovskaya (University of Southampton, United Kingdom)

• Professor Caroline Roberts (University of Lausanne and FORS - Swiss Centre of Expertise in the Social Sciences, Switzerland)

• Professor Nicolas Sauger (Sciences Po, France)

• Professor Signe Bock Seggaard (Institute for Social Research, Norway)

• Professor Bella Struminskaya (Utrecht University, Netherlands)

The ESS ERIC Director, Professor Rory Fitzgerald (ESS ERIC HQ at City, University of London) attends MAB meetings as an observer.

#### Finance Committee (FINCOM) at 31 May 2024

The Finance Committee (FINCOM) is comprised of four members, two of which are National Representatives at the General Assembly. FINCOM advises the General Assembly and the Director on the ESS ERIC finances.

• Chair: Beccy Shipman, Economic and Social Research Council, UK Research and Innovation, UK (national representative)

• Dr. Eckard Kämper, DFG, Germany (external expert)

• Diāna Laipniece, Ministry of Education and Science, Latvia (national representative)

• Pierre-Olivier Pin, ANR, French National Research Agency (external expert, co-opted)

The ESS ERIC Director, Professor Rory Fitzgerald (ESS ERIC HQ, City, University of London) attends FINCOM meetings as an observer.

#### Research Ethics Board (REB) at 31 May 2024

• Julie de Jong (Chair - USA)

• Manuela Bonacci (National Coordinators' representative - Italy)

• Emily Gilbert (ordinary member - UK)

• Edith de Leeuw (MAB representative - The Netherlands)

• Tom Smith (SAB representative - United States)

• Gert Wagner (ordinary member - Germany)

#### Funding, Governance and Strategy Working Group (FGSWG) at 31 May 2024

The Chair of the General Assembly acts as Chair of the FGSWG.

• Chair: Professor Ann-Helén Bay, University of Oslo, Norway (General Assembly Chair)

• Dr Susanna Bylin, Swedish Research Council, Sweden (national representative)

• Beccy Shipman, Economic and Social Research Council, UK Research and Innovation, UK (national representative)

The ESS ERIC Director, Professor Rory Fitzgerald, and ESS ERIC Deputy Director, Dr. Eric Harrison (ESS ERIC HQ, City, University of London), attend FGSWG meetings as observers.

## ANNEX 3

### MEMBERSHIP OF THE ESS ERIC DIRECTOR'S COMMITTEES

The Director, Professor Rory Fitzgerald, is located at ESS ERIC Headquarters at its Host Institution, City, University of London. Professor Fitzgerald and the team are supported in the design and implementation of the ESS ERIC Work Programme by seven other institutions that collectively comprise the ESS ERIC Core Scientific Team.

#### Core Scientific Team (CST) at 31 May 2024

Members of the CST are:

- Centerdata (Netherlands)
- GESIS - Leibniz Institute for the Social Sciences (Germany)
- Sikt - Norwegian Agency for Shared Services in Education and Research (Norway)
- SCP - The Netherlands Institute for Social Research (Netherlands)
- Universitat Pompeu Fabra (Spain)
- University of Essex (UK)
- University of Ljubljana (Slovenia)

Senior representatives of the CST attend the meetings of the ESS ERIC General Assembly.

#### National Coordinators' Forum (NCF) at 31 May 2024

The ESS ERIC Director also convenes a National Coordinators' Forum, attended by National Coordinators (NC) appointed by ESS ERIC Members, Observers and Guests.

For the period 1 June 2023 to 31 May 2024, the representative of NCs elected to attend meetings of the Director's Core Scientific Team is Dr Sveinung Arnesen (Norway); with alternate Dr Alice Ramos (Portugal). The representative of NCs attending the ESS ERIC General Assembly is Dr Peter Grand (Austria).

**Austria:** Dr. Peter Grand, Institute for Advanced Studies (IHS)

**Belgium:** Professor Bart Meuleman, Katholieke Universiteit Leuven and Professor Pierre Baudewyns, University of Louvain

**Bulgaria:** Professor Venelin Boshnakov, University of National and World Economy

**Croatia:** Professor Dragan Bagić, University of Zagreb

**Cyprus:** Dr. Stelios Stylianou, Cyprus University of Technology

**Czechia:** Dr. Klára Plecítá, Institute of Sociology, Czech Academy of Sciences

**Estonia:** Sabina Trankmann, University of Tartu

**Finland:** Professor Heikki Ervasti, University of Turku

**France:** Agnaly Michaud and Emiliano Grossman, Sciences Po

**Germany:** Dr. Oshrat Hochman, GESIS – Leibniz-Institute for the Social Sciences

**Greece:** Manina Kakepaki, National Centre for Social Research (EKKE)

**Hungary:** Dr. Bence Ságvári, Hungarian Academy of Sciences

**Iceland:** Professor Sigrún Ólafsdóttir, University of Iceland

**Ireland:** Professor Philip O'Connell, Professor Mathew Creighton and Dr. Micheál Collins, UCD

**Israel:** Dr. Irit Adler, B. I. Cohen Inst. for Public Opinion Research at Tel-Aviv University

**Italy:** Sveva Balduini, National Institute for Public Policy Analysis (INAPP)

**Latvia:** Dr. Jurijs Ņikišins, University of Latvia

**Lithuania:** Dr. Apolonijus Žilys, Vytautas Magnus University

**Montenegro:** Jadranka Kaludjerovic, ISSP - Institute for Strategic Studies and Prognoses

**Netherlands:** Dr. Tim Reeskens, associate professor of sociology at Tilburg University

**Norway:** Sveinung Arnesen, University of Bergen (UiB)

**Poland:** Dr. Michal Kotnarowski, Polish Academy of Sciences

**Portugal:** Dr. Alice Ramos, Institute of Social Sciences (ICS), University of Lisbon

**Serbia:** Vera Backović and Vladimir Mentus, University of Belgrade

**Slovak Republic:** Denisa Fedakova, Institute of Social Sciences, Slovak Academy of Sciences

**Slovenia:** Dr. Slavko Kurdija, University of Ljubljana

**Spain:** Pablo Oñate, University of Valencia on behalf of Centre for Sociological Studies (CIS)

**Sweden:** Professor Mikael Hjerm, Umeå University

**Switzerland:** Dr. Michèle Ernst Stähli, FORS - Swiss Centre of Expertise in the Social Sciences

**Ukraine:** Tymofii Brik, Kyiv School of Economics (KSE) and Andrii Gorbachyk, Taras Shevchenko National University of Kyiv

**UK:** Alun Humphrey, NatCen Social Research

## ANNEX 4

### AUDITED ACCOUNTS 2023-24

#### Statement of Comprehensive Income: 01 June 2023 to 31 May 2024

|   | 1 June 2023<br>to 31 May 2024 | 1 June 2023<br>to 31 May 2024<br>(restated) |
|---|-------------------------------|---|
|   | €                             | €   |
| <b>INCOME</b>                                   | <b>10,034,697</b>             | <b>3,279,734</b>                            |
| Direct costs                                    | (9,912,617)                   | (3,133,692)                                 |
| <b>GROSS SURPLUS</b>                            | <b>122,026</b>                | <b>146,042</b>                              |
| Administrative expenses                         | (462,058)                     | (86,556)                                    |
| <b>(DEFICIT)/SURPLUS FOR THE FINANCIAL YEAR</b> | <b>(340,032)</b>              | <b>59,486</b>                               |

#### Statement of Financial Position at 31 May 2024

|  | 2024        |                | 2023<br>(restated) |                |
|--|-------------|----------------|--------------------|----------------|
|  | €           | €              | €                  | €              |
| <b>CURRENT ASSETS</b>                  |             |                |                    |                |
| Debtors                                | 279,122     |                | 550,296            |                |
| Cash at bank                           | 3,207,520   |                | 3,009,709          |                |
|  | -----       |                | -----              |                |
|  | 3,486,642   |                | 3,440,005          |                |
| <b>CREDITORS:</b>                      |             |                |                    |                |
| amounts falling due<br>within one year | (2,845,723) |                | (2,579,054)        |                |
|  | -----       |                | -----              |                |
| <b>NET ASSETS</b>                      |             | <b>640,919</b> |                    | <b>980,951</b> |
|  |             | -----          |                    | -----          |
| <b>RESERVES</b>                        |             |                |                    |                |
| Income and<br>expenditure account      |             | <b>640,919</b> |                    | <b>980,951</b> |
|  |             | -----          |                    | -----          |
| <b>TOTAL RESERVES</b>                  |             | <b>640,919</b> |                    | <b>980,951</b> |
|  |             | -----          |                    | -----          |

\*The account to 31 May 2023 were restated to correct a debtor overstatement relating to EU projects.

The Annual Financial Statements for Year Ended 31 May 2024, including the Audit Opinion, together with Wenn Townsend's Report to Management were presented to, and adopted by, the ESS ERIC General Assembly at its 28th meeting, held on 16th October 2024 in Oslo, Norway.

## ANNEX 5

### KEY PERFORMANCE INDICATORS (KPIs)

| Objective                          | KPI  | ESS application and source (+/- compared to previous period)  |
|------------------------------------|--|---|
| Enabling scientific excellence     | 1. Number of user requests for access  | Downloaders - Ever: 183,106; 165,980; last 12 months: 17,126 (-3,610 compared to previous period);<br>Downloads - Ever: 1,509,690; last 12 months: 31,683 (-43,724) <sup>3</sup>  |
|                                    | 2. Number of users served  | Registered users - Ever: 237,048; last 12 months: 18,362 (+7) <sup>4</sup>  |
|                                    | 3. Number of publications  | Academic articles - Ever: 7,060; last 12 months: 475 (-144) <sup>5</sup>  |
|                                    | 4. Percentage of top (10%) cited publications  | 21% (N/A) <sup>6</sup>  |
| Delivery of education and training | 5. Number of master and PhD students using the RI  | PhD and students registered - Ever: 181,507; last 12 months: 14,925 (+643) <sup>7</sup>   |
|                                    | 6. Training of people who are not RI staff   | Training course attendees - Ever: 2,034 <sup>8</sup> ; Last 12 months: 812 (+406) <sup>9</sup>  |
| Enhancing collaboration in Europe  | 7. Number of Members, Observers and Guests of the RI (Round 11 participants)<br>ESS Member countries shown in <b>bold</b> ; ESS Observer shown in <i>italics</i> ; ESS Round 11 Guests shown in plain text<br>ESFRI status is shown as (M) = Member State; (AC) = Associated Country; (-) = no affiliation | 31 (-2):<br><b>Austria (M); Belgium (M); Bulgaria (M); Croatia (M); Cyprus (M); Czechia (M); Estonia (M); Finland (M); France (M); Germany (M); Greece (M); Hungary (M); Iceland (AC); Ireland (M); Israel (AC); Italy (M); Latvia (M); Lithuania (M); Montenegro (AC); Netherlands (M); Norway (AC); Poland (M); Portugal (M); Serbia (AC); Slovak Republic (M); Slovenia (M); Spain (M); Sweden (M); Switzerland (AC); United Kingdom (-); Ukraine (AC)</b> |
| Enhancing collaboration in Europe  | 8. Share of users and publications per ESFRI member country  | See separate table below <sup>10</sup>  |

| Objective              | KPI  | ESS application and source (+/- compared to previous period)   |
|------------------------|--|--|
| Outreach to the public | 9. Engagement achieved by direct contact           | Engagement, last 12 months:<br>User Bulletin recipients: 20,766 (+2,555) <sup>11</sup><br>Activities by HQ/CST: 1,405 attendees (+141)<br>Activities by NCs: 180 attendees (-483)  |
|                        | 10. Outreach through media                         | Media articles mentioning ESS - Ever: 7,795; last 12 months: 1,291 (+250) <sup>13</sup>  |
|                        | 11. Outreach via the RI's own web and social media | ESS website - Ever (1 June 2017 - 31 May 2024): 8,954,970 <sup>14</sup><br>ESS website - Last 12 months (1 June 2023 - 31 May 2024): 456,720 <sup>15</sup><br>Facebook (1 June 2023 - 31 May 2024): 2,651 followers (+233); 37,900 (-38,223) Reach. <sup>16</sup><br>LinkedIn (1 June 2023 - 31 May 2024): 2,728 followers (+725); 120,104 Impressions (+36,620); 61,519 (+21,146) Unique Impressions. <sup>17</sup><br>X (Twitter) (1 June 2023 - 31 May 2024): 20,666 19,593 followers (+1,073) <sup>18</sup><br>YouTube (1 June 2023 - 31 May 2024): 639 subscribers (+137); 10,200 (+2,800) views. <sup>19</sup><br>Access of on-line training (EduNet) - Ever (since August 2016): 399,766; last 12 months: N/A <sup>20</sup> |

3. Downloaders data was provided by Sikt and covers the time period from 1 June 2023 – 31 May 2024.

4. Registered user data was provided by Sikt and covers the time period from 1 June 2023 – 31 May 2024.

5. The figure for number of publications is taken from D11.7. European Social Survey bibliographic indexing report (Intermediate report) 2024 compiled by Brina Malnar, University of Ljubljana. This research is compiled by calendar year, meaning the number of publications in the last 12 months refers to 1 January – 31 December 2023.

## ANNEX 5

### KEY PERFORMANCE INDICATORS (KPIs)

| Objective                      | KPI  | ESS application and source (+/- compared to previous period)  |
|--------------------------------|--|---|
| Optimising data use            | 12. Number of publicly available data sets used externally | 289 ESS data files are publicly available on the ESS Data Portal. The Data Portal also includes an updated version of the ESS Data Wizard, allowing users to create a bespoke subset of data by selecting variables (questions), countries and/or round(s) of data collection.<br><br>Additionally, multilevel (contextual) data compiled from external sources is available to download alongside ESS data for rounds 4-10. There are seven further data files here. |
| Provision of scientific advice | 13. Participation by RIs in policy related activities      | Last 12 months: 3 (-1) <sup>21</sup>  |
|                                | 14. Citations in policy related publications               | Ever: 4,165; last 12 months: 756 <sup>22</sup>  |

6. This figure is taken from the February 2022 report: SUSTAIN-2: Impact of the European Social Survey. This bibliometric analysis was undertaken by the Centre for Science and Technology Studies (CWTS) on behalf of Technopolis Group (UK). This report was produced for the Horizon 2020 project, SUSTAIN-2 (grant agreement number 871063). There are currently no plans to repeat this work as part of the ESS ERIC work programme.

7. Registered user data was provided by Sikt and covers the time period from 1 June 2023 – 31 May 2024.

8. This information has only been collated since 2021.

9. The information was compiled by ESS HQ for the period 1 June 2023 – 31 May 2024 and relied on submissions by the CST and national teams. There is no formal training provided in the ESS ERIC work programme.

10. Registered user data per country was provided by Sikt and covers the time period from 1 June 2023 – 31 May 2024. The figure for number of publications is taken from D11.7. European Social Survey bibliographic indexing report (Intermediate report) 2024 compiled by Brina Malnar, University of Ljubljana. This research is compiled by calendar year, meaning the number of publications in the last 12 months refers to 1 January – 31 December 2023.

| Objective                               | KPI  | ESS application and source (+/- compared to previous period) |
|---|--|--|
| Facilitating international co-operation | 15. Share of users and publications per non-ESFRI member country | See separate table below                                     |
|   | 16. Number of members of the RI from non-ESFRI countries         | 1 ESS Member and non-ESFRI country (United Kingdom)          |
| Optimising management                   | 17. Revenues (Country contributions: central costs)              | €2,951,935 (2023-24)   |

11. This is the number of people who had opted in to receive the ESS e-newsletter (via their ESS Data Portal account) at the end of May 2024.

12. The information was compiled by ESS HQ for the period 1 June 2023 – 31 May 2024 and relied on submissions by the CST and national teams.

13. Media monitoring for ESS mentions began in January 2016. The figure for the last 12 months is taken from the annual media monitoring report, covering the period from 1 June 2023 – 31 May 2024.

14. ESS website data is taken from Google Analytics. Data is only available from 1 June 2017.

15. ESS website data is taken from Google Analytics.

16. ESS Facebook data is taken from Facebook insights.

17. ESS LinkedIn data is taken from LinkedIn.

18. ESS Twitter/X Analytics data is no longer available without a premium subscription.

19. ESS YouTube data is taken from YouTube.

20. The information is taken from Google Analytics via Sikt. Since 1 June 2022, EduNet has not been accessible.

21. The information was compiled by ESS HQ for the period 1 June 2023 – 31 May 2024 and relied on submissions by the CST and national teams.

22. This figure is taken from a search of "European Social Survey" via the Overton database of documents added up to 31 May 2024.



## ANNEX 5

### KPI 8 AND 15. SHARE OF USERS AND PUBLICATIONS PER ESFRI AND NON-ESFRI MEMBER COUNTRY

| Country             | Registered Users |                  |                              | Publications     |                  |                              |
|---------------------|------------------|------------------|------------------------------|------------------|------------------|------------------------------|
|                     | Total (May 2024) | Total (May 2023) | Last 12 months <sup>25</sup> | Total (Dec 2023) | Total (Dec 2022) | Last 12 months <sup>26</sup> |
| <b>Austria (M)</b>  | 6,324            | 5,632            | 692                          | 121              | 110              | 11                           |
| <b>Belgium (M)</b>  | 16,515           | 15,201           | 1,314                        | 416              | 399              | 17                           |
| <b>Bulgaria (M)</b> | 974              | 835              | 139                          | 47               | 42               | 5                            |
| <b>Croatia (M)</b>  | 650              | 563              | 87                           | 22               | 19               | 3                            |
| <b>Cyprus (M)</b>   | 443              | 422              | 21                           | 19               | 18               | 1                            |
| <b>Czechia (M)</b>  | 1,918            | 1,731            | 187                          | 85               | 66               | 19                           |
| <b>Estonia (M)</b>  | 3,577            | 3,335            | 242                          | 100              | 95               | 5                            |
| <b>Finland (M)</b>  | 3,922            | 3,638            | 284                          | 191              | 180              | 11                           |
| <b>France (M)</b>   | 8,948            | 8,078            | 870                          | 168              | 153              | 15                           |
| <b>Germany (M)</b>  | 25,400           | 23,313           | 2,087                        | 937              | 865              | 72                           |
| Greece (M)          | 1,910            | 1,808            | 102                          | 103              | 95               | 8                            |
| <b>Hungary (M)</b>  | 4,137            | 3,769            | 368                          | 138              | 126              | 12                           |
| <b>Iceland (AC)</b> | 566              | 545              | 21                           | 14               | 12               | 2                            |
| <b>Ireland (M)</b>  | 3,195            | 2,895            | 300                          | 152              | 145              | 7                            |
| <b>Israel (AC)</b>  | 2,225            | 2,148            | 77                           | 133              | 126              | 7                            |
| <b>Italy (M)</b>    | 11,917           | 10,472           | 1,445                        | 449              | 401              | 48                           |
| <b>Latvia (M)</b>   | 473              | 452              | 21                           | 10               | 8                | 2                            |

| Country                    | Registered Users |                  |                              | Publications     |                  |                              |
|----------------------------|------------------|------------------|------------------------------|------------------|------------------|------------------------------|
|                            | Total (May 2024) | Total (May 2023) | Last 12 months <sup>25</sup> | Total (Dec 2023) | Total (Dec 2022) | Last 12 months <sup>26</sup> |
| <b>Lithuania (M)</b>       | 1,848            | 1,688            | 160                          | 46               | 41               | 5                            |
| Montenegro (AC)            | 293              | 251              | 42                           | 2                | 0                | 2                            |
| <b>Netherlands (M)</b>     | 14,858           | 13,673           | 1,185                        | 672              | 636              | 36                           |
| <b>Norway (AC)</b>         | 12,431           | 11,469           | 962                          | 261              | 244              | 17                           |
| <b>Poland (M)</b>          | 9,694            | 9,087            | 607                          | 217              | 198              | 19                           |
| <b>Portugal (M)</b>        | 5,307            | 4,852            | 455                          | 205              | 191              | 14                           |
| <b>Serbia (AC)</b>         | 688              | 494              | 194                          | 26               | 21               | 5                            |
| <b>Slovak Republic (M)</b> | 648              | 595              | 53                           | 34               | 32               | 2                            |
| <b>Slovenia (M)</b>        | 5,161            | 5,066            | 95                           | 60               | 57               | 3                            |
| <b>Spain (M)</b>           | 15,247           | 14,264           | 983                          | 463              | 435              | 28                           |
| <b>Sweden (M)</b>          | 6,261            | 5,734            | 527                          | 407              | 376              | 31                           |
| Switzerland (AC)           | 6,766            | 6,200            | 566                          | 274              | 255              | 19                           |
| Ukraine (AC)               | 2,678            | 2,553            | 125                          | 23               | 23               | 0                            |
| <b>United Kingdom (-)</b>  | 20,566           | 19,160           | 1,406                        | 1,036            | 975              | 61                           |

25. User statistics are available via [https://stessrelpubprodwe.blob.core.windows.net/data/ESS\\_user\\_statistics/ESS\\_User\\_Statistics.html](https://stessrelpubprodwe.blob.core.windows.net/data/ESS_user_statistics/ESS_User_Statistics.html) [accessed 31 May 2024]

26. The figure for number of publications is taken from D11.7. European Social Survey bibliographic indexing report (Intermediate report) 2024 compiled by Brina Malnar, University of Ljubljana. This research is compiled by calendar year, meaning the number of publications in the last 12 months refers to 1 January – 31 December 2023.

