

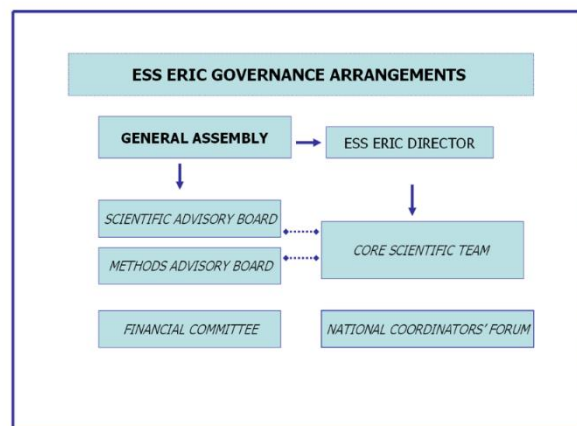
European Social Survey ERIC – Call for nominations for the General Assembly Chair

ESS ERIC is an ESFRI landmark Research Infrastructure which exists to convene and exploit a biennial cross-national general social survey for Europe. The ERIC has 28 members and 1 Observer and has serviced over 200,000 users since its inception in 2001 whilst almost 6000 publications use its data. For more information about the ESS visit the website www.europeansocialsurvey.org.

The main aims of ESS ERIC are to:

- operate a Research Infrastructure providing high quality data measuring change (and stability) over time within and between European countries in their living conditions, social structure, public opinion and attitudes;
- practise and promote the highest scientific standards in cross-national comparative research in the social sciences;
- continue the development of ESS infrastructure through ongoing methodological research and innovation;
- facilitate training in the effective use of ESS data;
- ensure the visibility, accessibility and reach of ESS data among researchers in the social sciences and beyond, policy makers and the wider public, at both the national and international level.

ESS ERIC is seeking to appoint a new Chair of its General Assembly (GA) from November 2023 following the end of term of the existing chair Professor Michael Breen (chair since 2013). The GA is the primary governance organ of the ERIC and consists of one representative from each member country. The figure below shows the ESS ERIC governance arrangements.



Statutes

The ESS ERIC [statutes](#) specify the role of the chair: “The General Assembly shall appoint by simple majority vote an independent Chair (the Chair), *who must not be a National Representative* and who shall comply with such criteria as are approved by the General Assembly when necessary”.

The Chair shall be appointed for a term of 4 years, which shall be renewable. Prior to appointing the Chair, the General Assembly shall put forward written nominations of candidate(s) at least 3 weeks in advance of the meeting at which the Chair shall be appointed. The Chair shall take office as soon as possible after his/her appointment.

The Chair shall preside at every meeting of the General Assembly, or if there is no Chair, or if he or she shall not be present at the time appointed for the holding of the meeting or is unwilling to act, the Deputy Chair shall preside as Chairperson, or if he or she is not be present or is unwilling to act, the present National Representatives shall elect one of their number to be Chairperson of the meeting.

Role for the Chair

The role of the Chair includes (but is not limited to) the following tasks:

- Chair all GA meetings (usually 2 in-person meetings per year) in line with the ESS ERIC statutes and standing orders;
- Receive ESS ERIC membership and observer applications;
- Agree the agenda for GA meetings with the ESS ERIC Director prior to each meeting;
- Be available to discuss matters informally and confidentially with the Director;
- Approve minutes for each GA meeting prior to circulation to the GA;
- Chair the ESS ERIC Funding, Governance and Strategy Working Group (FGSWG) (usually 2 per year). The group advises and supports the General Assembly and Director to ensure effective financial and governance planning;
- Attend the ESS ERIC Troika (consisting of ESS ERIC, City, University of London and UKRI-ESRC) which oversees the relationship with the host institution of ESS ERIC HQ;
- Chair the remuneration committee that sets the salary of the Director and Deputy Director;
- Approve any large expenditure requests between GA meetings;
- Attend the appraisal of the ESS ERIC Director (with the employer City, University of London);
- Discuss finance and governance matters that arise between meetings with the ESS ERIC Director.

The chair will be responsible for ensuring the good governance of the ESS ERIC. The chair will not be involved in detailed scientific matters (which are the responsibility of the Director and his Core Scientific Team) or operational matters (which are the responsibility of the Director and the ESS National Coordinators).

There is no remuneration for the Chair, however travel and subsistence costs as well as other out of pocket expenses are covered by ESS ERIC. In general, around 3-4 days per year are required to be in attendance in person at ESS events with all other activities contributed remotely (approximately a further 6-8 days). This includes responding to *ad hoc* requests from the ESS ERIC Director and HQ.

Candidate specification

Candidates must have experience of chairing large meetings as well as managerial experience (e.g. as a University Dean or running a large research centre). Candidates should be senior social scientists who have a basic understanding of large-scale survey research (ideally in a cross-national setting). Knowledge about research funding and research infrastructure at the European level (e.g. EC / ESFRI) would be helpful. The working language of ESS ERIC is English.

Candidates nominated will be given the opportunity to speak to ESS ERIC Director before the General Assembly meeting at which the nomination will be decided.

Appointment process

Nominations for Chair are submitted by GA member representatives (see attached list). Those interested in being nominated should therefore contact the national representative of the country

where they are located. All nominations made by the GA member representative must have the prior approval of the nominee. All nominees must reside in Europe. Those nominated should provide a (maximum one page) statement explaining their motivations to become the GA chair as well as providing a copy of their CV (maximum 5 pages). **All nominations must be received by ESS ERIC HQ via ESS ERIC GA national representative by 1 September 2023.**

The GA will then appoint the Chair via an election at a virtual meeting on 18 October 2023.

The Chair will take office on the 17th of November 2023 at the ESS ERIC GA meeting in the Hague (Netherlands).

Appendix I. General Assembly representatives

Country	Name of representative	E-mail address
Austria	Julia Prikoszovits	julia.prikoszovits[at]bmbwf.gv.at
Belgium (Federal rep)	Aziz Naji	Aziz.NAJI[at]belspo.be
Belgium (Flemish rep)	Bart Dumolyn	bart.dumolyn[at]ewi.vlaanderen.be
Belgium (French rep)	Martin Degand	Martin.DEGAND[at]cfwb.be
Bulgaria	Zornitsa Georgieva	z_georgieva[at]mon.bg
Croatia	Stasa Skenzic	stasa.skenzic[at]mzo.hr
Cyprus	Eleana Gabriel	egabriel[at]dmrid.gov.cy
Czechia	Nada Drizga	Nada.Drizga[at]msmt.cz
Estonia	Erle Rikmann	erle.rikmann[at]sm.ee
Finland	Päivi Messo	paivi.messo[at]aka.fi
France	Eleonora Zuolo	eleonora.zuolo[at]recherche.gouv.fr
Germany	Johanna Puhl	Johanna.puhl[at]dlr.de
Germany	Katharina Pijnenburg	katharina.pijnenburg[at]bmbf.bund.de
Hungary	Tamás Takács	tamas.takacs[at]nkfih.gov.hu
Iceland	Guðbjörg Andrea Jónsdóttir	Gudbjorg.andrea.jonsdottir[at]hvin.is
Ireland	Rosemary Sweeney	rsweeney[at]research.ie
Israel	Alex Altshuler	alexa[at]most.gov.il
Italy	Sebastiano Fadda	s.fadda[at]inapp.org
Latvia	Diāna Laipniece	diana.laipniece[at]izm.gov.lv
Lithuania	Aurelija Stelmokienė	aurelija.stelmokiene[at]jvdu.lt
Montenegro	Milena Milonjic	milena.milonjic[at]mnr.gov.me
Netherlands	Joris Voskuilen	j.voskuilen[at]nwo.nl
Norway	Siri H. Hollekim Haaland	shh[at]forskingsradet.no
Poland	Anna Głabska	anna.glabska[at]mein.gov.pl
Portugal	Analia Torres	atorres[at]iscsp.ulisboa.pt
Portugal	Jorge Vala	jorge.vala[at]ics.ulisboa.pt
Serbia	Goran Bašić	basicgoran11[at]gmail.com
Slovak Republic	Simona Tanhäuseorvá	simona.tanhauserova[at]minedu.sk
Slovenia	Albin Kralj	albin.kralj[at]gov.si
Spain	Marían Rodríguez Parrilla	maria.rodriguez[at]ciencia.gob.es
Sweden	Susanna Bylin	susanna.bylin[at]vr.se
UK	Beccy Shipman	Beccy.Shipman[at]esrc.ukri.org

Replace [at] with @